

Florida Building Code Product Approval
FL14752.22-R3 Impact 9'0" x 8'0' Outswing, 3/4 Lite DP50

FL #	FL14752-R3						
Application Type	Revision						
Code Version	2010						
Application Status	Approved						
	*Approved by DBPR. Approvals by DBPR shall be reviewed and ratified by the POC and/or the Commission if necessary.						
Comments							
Archived	<input type="checkbox"/>						
Product Manufacturer	Nan Ya Plastics Corporation USA						
Address/Phone/Email	8989 North Loop East Houston, TX 77029 (713) 674-7822 Ext 105 ajen96@yahoo.com.tw						
Authorized Signature	RUSKIN WU ajen96@yahoo.com.tw						
Technical Representative	Ruskin Wu						
Address/Phone/Email	8989 North Loop East Houston, TX 77029-1217 (713) 674-7822 Ext 105 ajen96@yahoo.com.tw						
Quality Assurance Representative							
Address/Phone/Email							
Category	Exterior Doors						
Subcategory	Swinging Exterior Door Assemblies						
Compliance Method	Certification Mark or Listing						
Certification Agency	National Accreditation & Management Institute						
Validated By	National Accreditation & Management Institute,						
Referenced Standard and Year (of Standard)	<table border="0"> <thead> <tr> <th><u>Standard</u></th> <th><u>Year</u></th> </tr> </thead> <tbody> <tr> <td>AAMA/NWWDA 101/I.S.2</td> <td>1997</td> </tr> <tr> <td>AAMA/WDMA</td> <td>2002</td> </tr> </tbody> </table>	<u>Standard</u>	<u>Year</u>	AAMA/NWWDA 101/I.S.2	1997	AAMA/WDMA	2002
<u>Standard</u>	<u>Year</u>						
AAMA/NWWDA 101/I.S.2	1997						
AAMA/WDMA	2002						

Florida Building Code Product Approval
FL14752.22-R3 Impact 9'0" x 8'0" Outswing, 3/4 Lite DP50

	101/I.S.2/NAFS AAMA/WDMA/CSA 101/I.S.2/A440 ASTM E1886 ASTM E1886 ASTM E1996 ASTM E1996 ASTM E1996 ASTM E330	2008 2005 2002 2002 2005 2006 2002
Equivalence of Product Standards Certified By		
Product Approval Method	Method 1 Option A	
Date Submitted	10/22/2014	
Date Validated	11/24/2014	
Date Pending FBC Approval		
Date Approved	11/25/2014	

14752.22	Series 8'0 3/4 Lite Side Hinged Fiberglass Patio Door w/ and w/o Sidelites	NEUMA OUTSWING - 9'0" X 8'0" , 3/4 GLAZED, 3 PANEL DP50
Limits of Use Approved for use in HVHZ: No Approved for use outside HVHZ: Yes Impact Resistant: Yes Design Pressure: +50/-50 Other:		Certification Agency Certificate FL14752_R3_C_CAC_NI010145-R1.pdf Quality Assurance Contract Expiration Date 11/30/2017 Installation Instructions FL14752_R3_II_08-00999C.pdf Verified By: Luis R. Lomas, P.E. 62514 Created by Independent Third Party: Yes Evaluation Reports FL14752_R3_AE_511561C.pdf Created by Independent Third Party: Yes

NOTICE OF PRODUCT CERTIFICATION



Company: Nan Ya Plastics Corporation
 8989 North Loop East
 Houston, TX 77029

Certification No.: NI010145-R1
Certification Date: 03/01/2010
Expiration Date: 11/30/2017
Revision Date: 08/09/2013

Product: Series 8'0" Three-Quarter Lite Side-Hinged Fiberglass Patio Door w/ or w/o Sidelite (PVC Frame)

Specification: AAMA/WDMA/CSA 101/I.S.2/NAFS-02/ASTM E330-02/ASTM E1886-05/E1996-05

The "Notice of Product Certification" is only valid if the NAMI Certification Label has been applied to the product as described within this document. The certification label represents product conformity to the applicable specification and that all certification criteria has been satisfied. This product has been approved for listing within NAMI's Certified Product Listing at www.Namicertification.com. NAMI's Certification Program is accredited by The American National Standards Institute (ANSI).

Configuration	Inswing or Outswing	Glazed or Opaque	Maximum Size	Design Pressure Pos/Neg	Missile Impact Rated	Test Report Number Drawing Number & Comments
X Single	O/S	Glazed	3'0" x 8'0"	+50/-50 HGD-R50	Yes	CTLA 1987W/CTLA 1907W Maximum Glazing DLO: 25.25" x 63.25" Glazing: IG-1/8" Tempered Glass/Laminate-1/8" Annealed Glass/0.090" PVB Interlayer/1/8" Annealed Glass
XX Double	O/S	Glazed	5'11" x 8'0"	+50/-50 HGD-R50	Yes	CTLA 1987W/CTLA 1907W Maximum Glazing DLO: 25.25" x 63.25" Glazing: IG-1/8" Tempered Glass/Laminate-1/8" Annealed Glass/0.090" PVB Interlayer/1/8" Annealed Glass
OX/XO Single w/Sidelite	O/S	Glazed	5'11" x 8'0"	+50/-50 HGD-R50	Door-Yes Sidelite-Yes	CTLA 1987W/CTLA 1907W Maximum Glazing DLO: 25.25" x 63.25" Glazing: IG-1/8" Tempered Glass/Laminate-1/8" Annealed Glass/0.090" PVB Interlayer/1/8" Annealed Glass
OXX Double w/Sidelite	O/S	Glazed	8'10" x 8'0"	+50/-50 HGD-R50	Door-Yes Sidelite-Yes	CTLA 1987W/CTLA 1907W Maximum Glazing DLO: 25.25" x 63.25" Glazing: IG-1/8" Tempered Glass/Laminate-1/8" Annealed Glass/0.090" PVB Interlayer/1/8" Annealed Glass

**National Accreditation & Management Institute, Inc./4794 George Washington Memorial Highway/Hayes, VA 23072
 Tel-(804) 684-5124/Fax-(804) 684-5122**

NAMI AUTHORIZED SIGNATURE: _____

L. Roberto Lomas P.E.

233 W. Main St.

Danville, VA 24541

434-688-0609

rlomas@lrlomaspe.com

Engineering Evaluation Report

Report No.: 511561C

Manufacturer: Nan Ya Plastics Corporation
8989 North Loop East
Houston, TX 77029

Product Line: Series 8'0 3/4 Lite Side Hinged Fiberglass Patio Door w/ and w/o Sidelites

Compliance:

The above mentioned product has been evaluated for compliance with the requirements of the Florida Department of Business and Professional Regulation for Statewide Acceptance per Rule 61G20-3.005 method 1(a). The product listed herein complies with requirements of the Florida Building Code.

Supporting Technical Documentation:

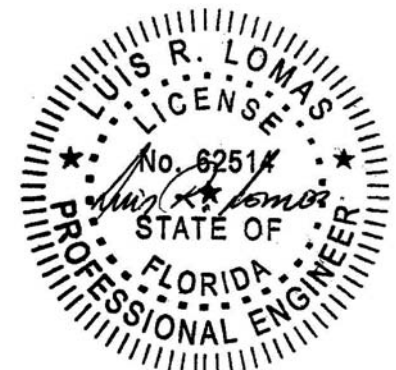
1. Approval document: drawing number 08-00999, Revision C, prepared, signed and sealed by Luis Roberto Lomas P.E.
2. Report No.: CTLA 1907W signed and sealed by Ramesh Patel P.E.
Certified Testing Laboratories, Orlando, FL
AAMA/WDMA/CSA 101/I.S.2/NAFS-02
Design pressure: ± 50.0 psf
Water penetration resistance 7.5psf
3. Report No.: CTLA 1987W signed and sealed by Ramesh Patel P.E.
Certified Testing Laboratories, Orlando, FL
ASTM E1886-05 and ASTM E1996-05
ASTM E1886/ E1996 Large Missile Impact, Level D, Wind Zone 4
ASTM E1886/ E1996 Cyclic Load Test, ± 50.0 psf design pressure
4. Anchor calculations, report number 511561-1, prepared, signed and sealed by Luis Roberto Lomas P.E.

Limitations and Conditions of use:

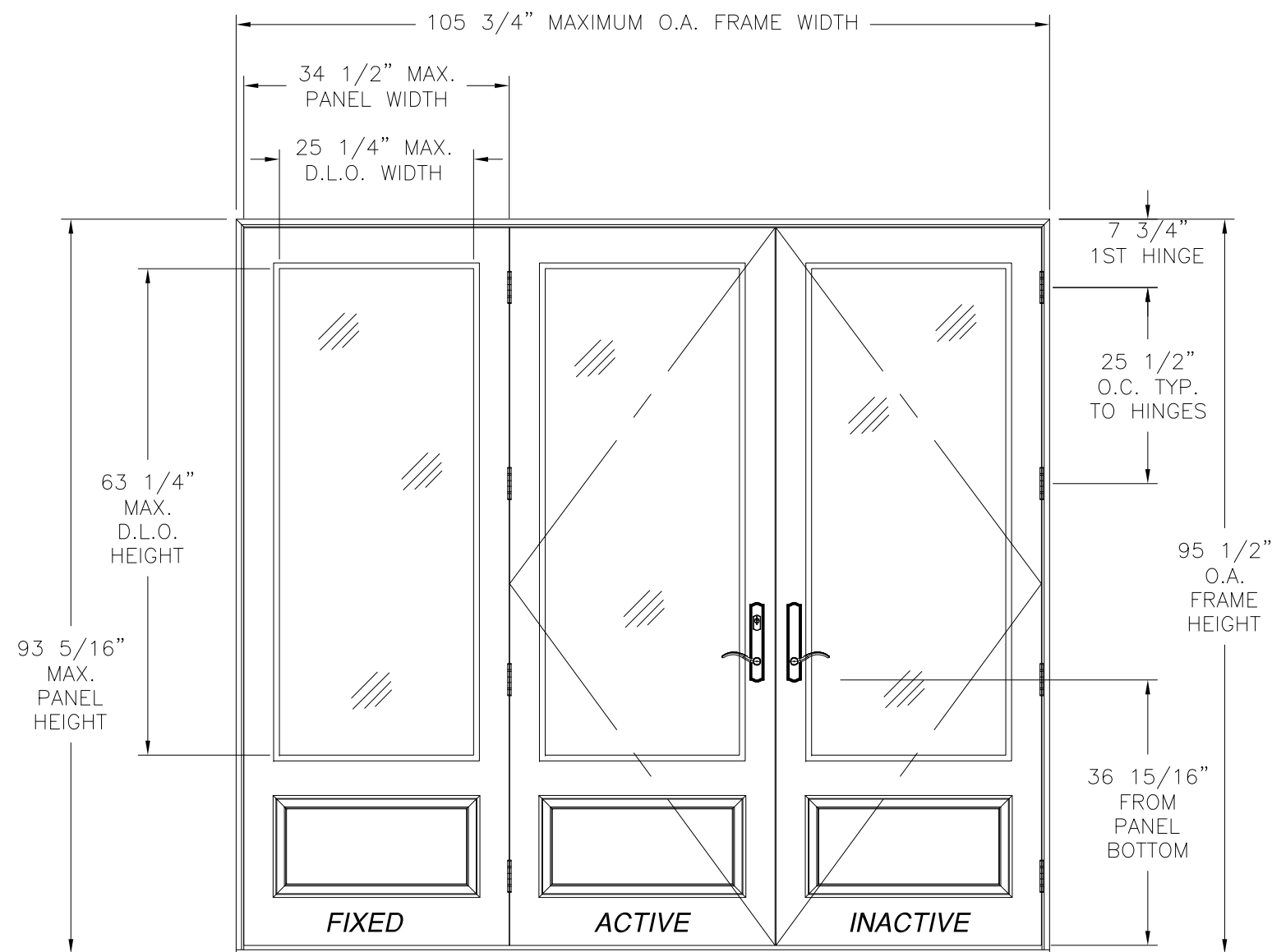
- Maximum design pressure: ± 50.0 psf
- Maximum unit size: 105 3/4" x 95 1/2"
- Units must be glazed per ASTM E 1300-04, see installation instructions for glass options.
- This product is not rated to be used in the HVHZ.
- This product is impact resistant and does not require impact protection in wind borne debris regions.
- Frame material to be rigid PVC.

Installation: Units must be installed in accordance with approval document, 08-00999, Revision C.

Certification of Independence: Please note that I don't have nor will acquire a financial interest in any company manufacturing or distributing the product(s) for which this report is being issued. Also, I don't have nor will acquire a financial interest in any other entity involved in the approval process of the listed product(s).



REVISIONS			
REV	DESCRIPTION	DATE	APPROVED
A	REVISED NOTES AND GLAZING DETAIL	03/12/12	R.L.
B	ADDED ANCHOR NOTE	05/29/12	R.L.
C	ADDED EDGE DISTANCES	11/05/14	R.L.



**SERIES 8'0 3/4 LITE SIDE HINGED FIBERGLASS
PATIO DOOR W/ SIDELITE
EXTERIOR VIEW**

DESIGN PRESSURE RATING	IMPACT RATING
±50PSF	LARGE MISSILE IMPACT

NOTES:

- THE PRODUCT SHOWN HEREIN IS DESIGNED AND MANUFACTURED TO COMPLY WITH REQUIREMENTS OF THE FLORIDA BUILDING CODE.
- WOOD FRAMING AND MASONRY OPENING TO BE DESIGNED AND ANCHORED TO PROPERLY TRANSFER ALL LOADS TO STRUCTURE. FRAMING AND MASONRY OPENING IS THE RESPONSIBILITY OF THE ARCHITECT OR ENGINEER OF RECORD.
- 1X BUCK OVER MASONRY/CONCRETE IS OPTIONAL. WHERE 1X BUCK IS NOT USED DISSIMILAR MATERIALS MUST BE SEPARATED WITH APPROVED COATING OR MEMBRANE. SELECTION OF COATING OR MEMBRANE IS THE RESPONSIBILITY OF THE ARCHITECT OR ENGINEER OF RECORD.
- UNITS MUST BE GLAZED PER ASTM E1300-04, SEE SHEET 2 FOR GLASS OPTIONS.
- APPROVED IMPACT PROTECTIVE SYSTEM IS NOT REQUIRED FOR THIS PRODUCT IN WIND BORNE DEBRIS REGIONS.
- SHIM AS REQUIRED AT EACH INSTALLATION ANCHOR WITH LOAD BEARING SHIM. SHIM WHERE SPACE OF 1/16" OR GREATER OCCURS. MAXIMUM ALLOWABLE SHIM STACK TO BE 1/4".
- FOR ANCHORING INTO WOOD FRAMING OR 2X BUCK USE #10 WOOD SCREWS WITH SUFFICIENT LENGTH TO ACHIEVE A 1 3/8" MINIMUM EMBEDMENT INTO SUBSTRATE. LOCATE ANCHORS AS SHOWN IN ELEVATIONS AND INSTALLATION DETAILS.
- FOR ANCHORING INTO MASONRY/CONCRETE USE 3/16" TAPCONS WITH SUFFICIENT LENGTH TO ACHIEVE A 1 1/4" MINIMUM EMBEDMENT INTO SUBSTRATE WITH 2 5/8" MINIMUM EDGE DISTANCE. LOCATE ANCHORS AS SHOWN IN ELEVATIONS AND INSTALLATION DETAILS.
- ALL FASTENERS TO BE CORROSION RESISTANT.
- INSTALLATION ANCHORS SHALL BE INSTALLED IN ACCORDANCE WITH ANCHOR MANUFACTURER'S INSTALLATION INSTRUCTIONS AND ANCHORS SHALL NOT BE USED IN SUBSTRATES WITH STRENGTHS LESS THAN THE MINIMUM STRENGTH SPECIFIED BELOW:
 - WOOD – MINIMUM SPECIFIC GRAVITY OF G=0.42
 - CONCRETE – MINIMUM COMPRESSIVE STRENGTH OF 3,192 PSI.
 - MASONRY – STRENGTH CONFORMANCE TO ASTM C-90, GRADE N, TYPE 1 (OR GREATER).
- FRAME JAMB AND HEAD MATERIAL: CO-EXTRUDED PVC FOAM 1 1/2" THICK.
- FRAME SILL MATERIAL: CO-EXTRUDED PVC FOAM 1 1/2" THICK WITH ALUMINUM CLADDING .063" THICK.
- DOOR PANEL AND SIDELITE MATERIAL: .075" THICK FIBERGLASS SKIN WITH PVC FOAM TOP AND BOTTOM RAILS, AND PVC FOAM VERTICAL STILES WITH PINE REINFORCEMENTS AND POLYURETHANE FOAM CORE.
- APPROVED CONFIGURATIONS: X, OX, XO, XX, OXO, XXO AND OXX. SEE SHEET 2.

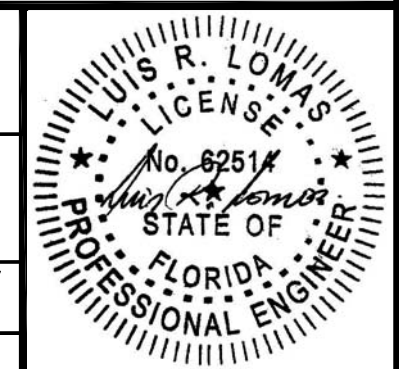
TABLE OF CONTENTS	
SHEET NO.	DESCRIPTION
1	ELEVATION AND NOTES
2	ADDITIONAL CONFIGURATIONS AND HARDWARE
3	ANCHORING LAYOUTS
4 – 6	INSTALLATION DETAILS

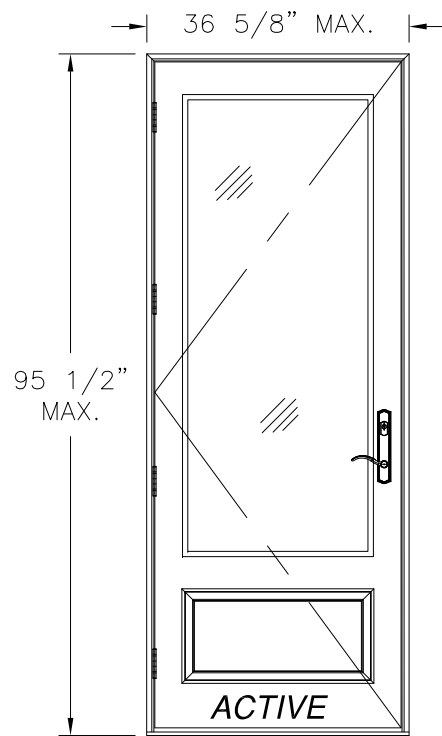
NAN YA PLASTICS CORP. USA
8989 NORTH LOOP EAST
HOUSTON, TX 77029

**SERIES 8'0 3/4 LITE SIDE HINGED FIBERGLASS
PATIO DOOR W/ & W/O SIDELITES
OXX ELEVATION AND NOTES**

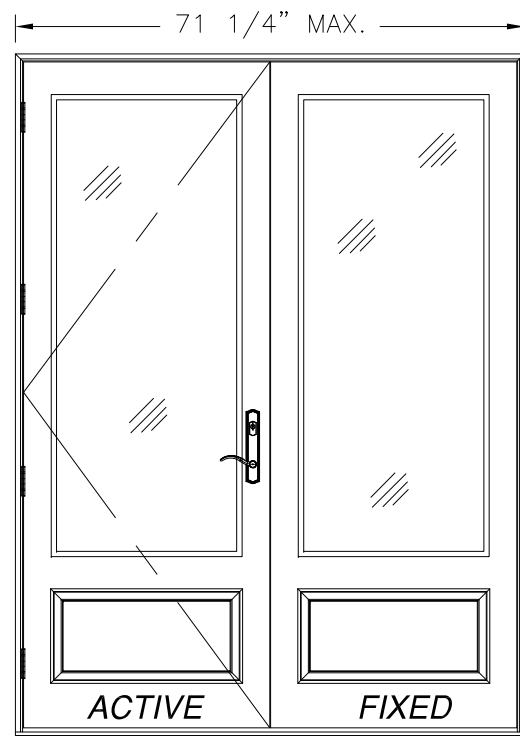
DRAWN: TJH	DWG NO. 08-00999	REV C
SCALE NTS	DATE 05/03/10	SHEET 1 OF 6

SIGNED: 11/06/2014

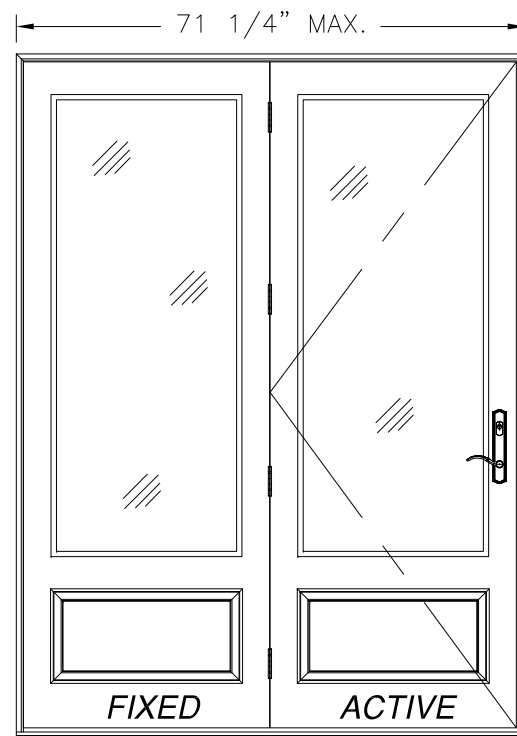




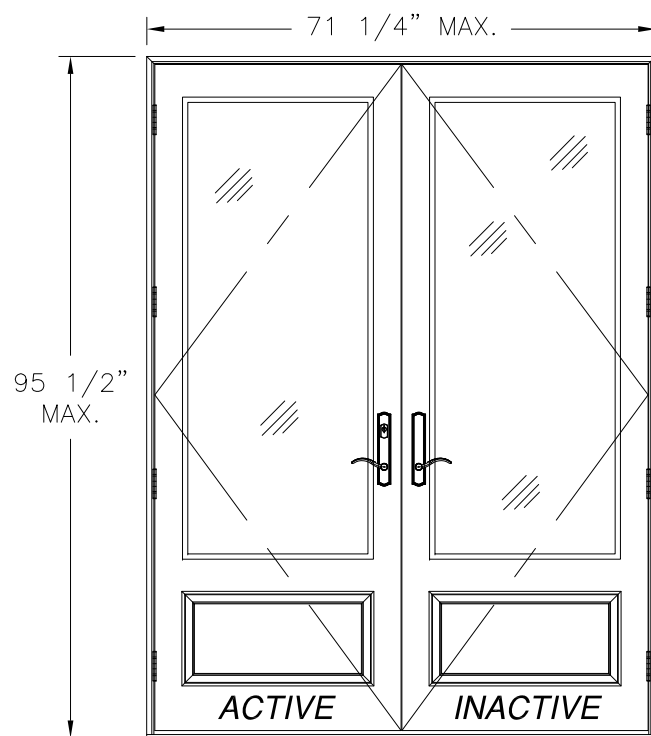
SINGLE
EXTERIOR VIEW



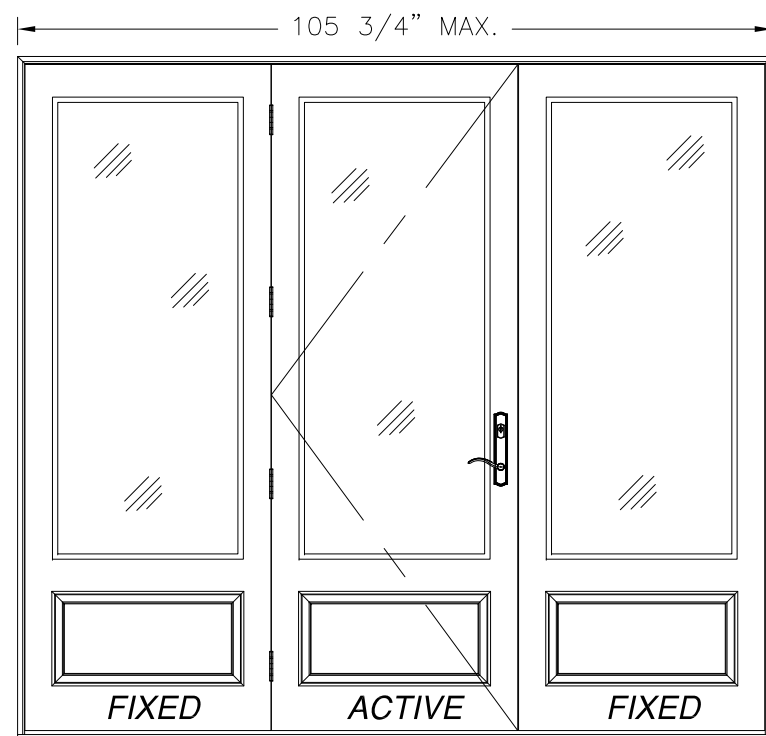
SINGLE W/SIDELITE
EXTERIOR VIEW



SINGLE W/SIDELITE
EXTERIOR VIEW



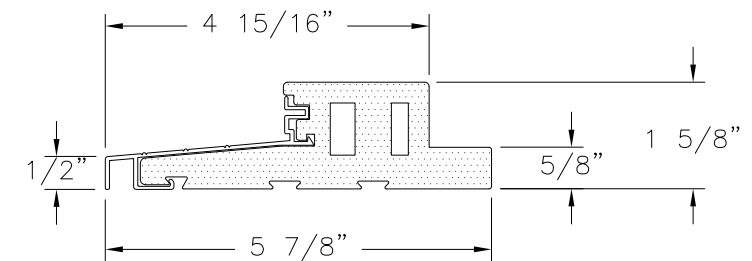
DOUBLE
EXTERIOR VIEW



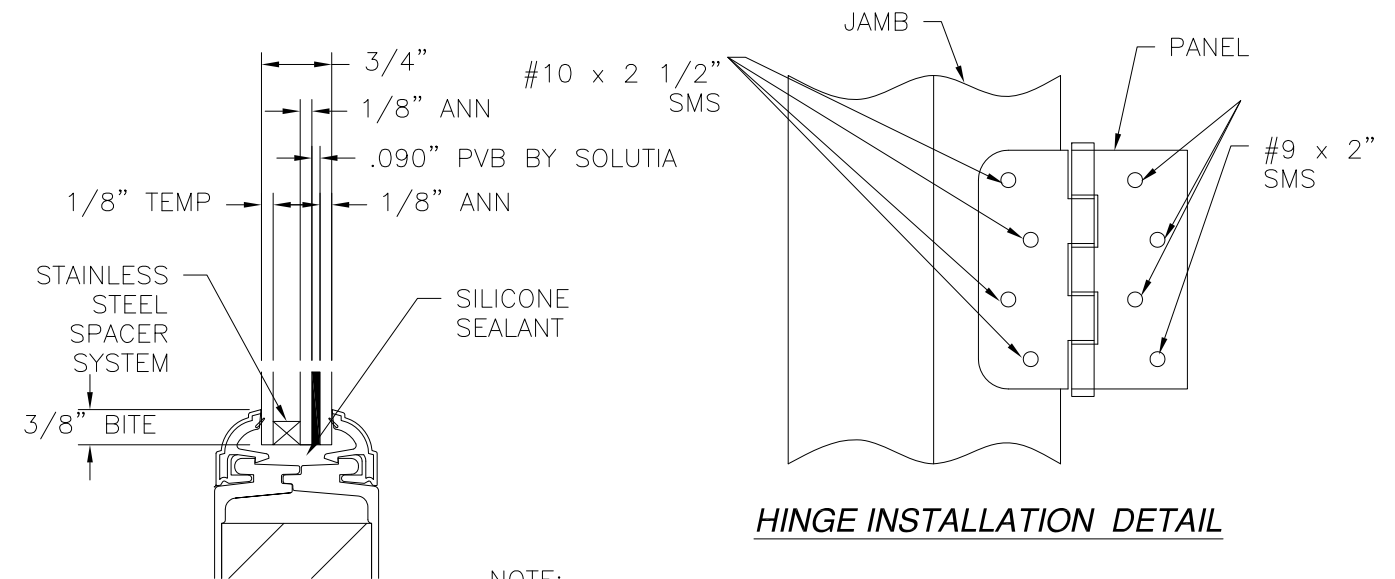
SINGLE W/SIDELITES
EXTERIOR VIEW

REVISIONS			
REV	DESCRIPTION	DATE	APPROVED
A	REVISED NOTES AND GLAZING DETAIL	03/12/12	R.L.
B	ADDED ANCHOR NOTE	05/29/12	R.L.
C	ADDED EDGE DISTANCES	11/05/14	R.L.

- A. 3-POINT LOCK HANDLE ASSEMBLY NINGBO MICOTA LOCKS
- B. (4) 4" x 4" BUTT HINGES BY WENZHOU LONGTAI HINGES
- C. EXTRUDED ALUMINUM & PVC FOAM ASTRAGAL BY NAN YA PLASTICS
- D. EXTRUDED ALUMINUM & PVC FOAM MULLION BY NAN YA PLASTICS



OUTSWING DOOR SILL DETAIL



HINGE INSTALLATION DETAIL

GLAZING DETAIL

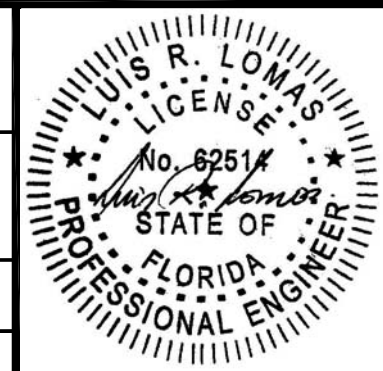
NOTE:
ALL APPROVED CONFIGURATIONS ARE SHOWN AS LEFT HAND ACTIVE, RIGHT HAND ACTIVE IS ALSO APPROVED.

SIGNED: 11/06/2014

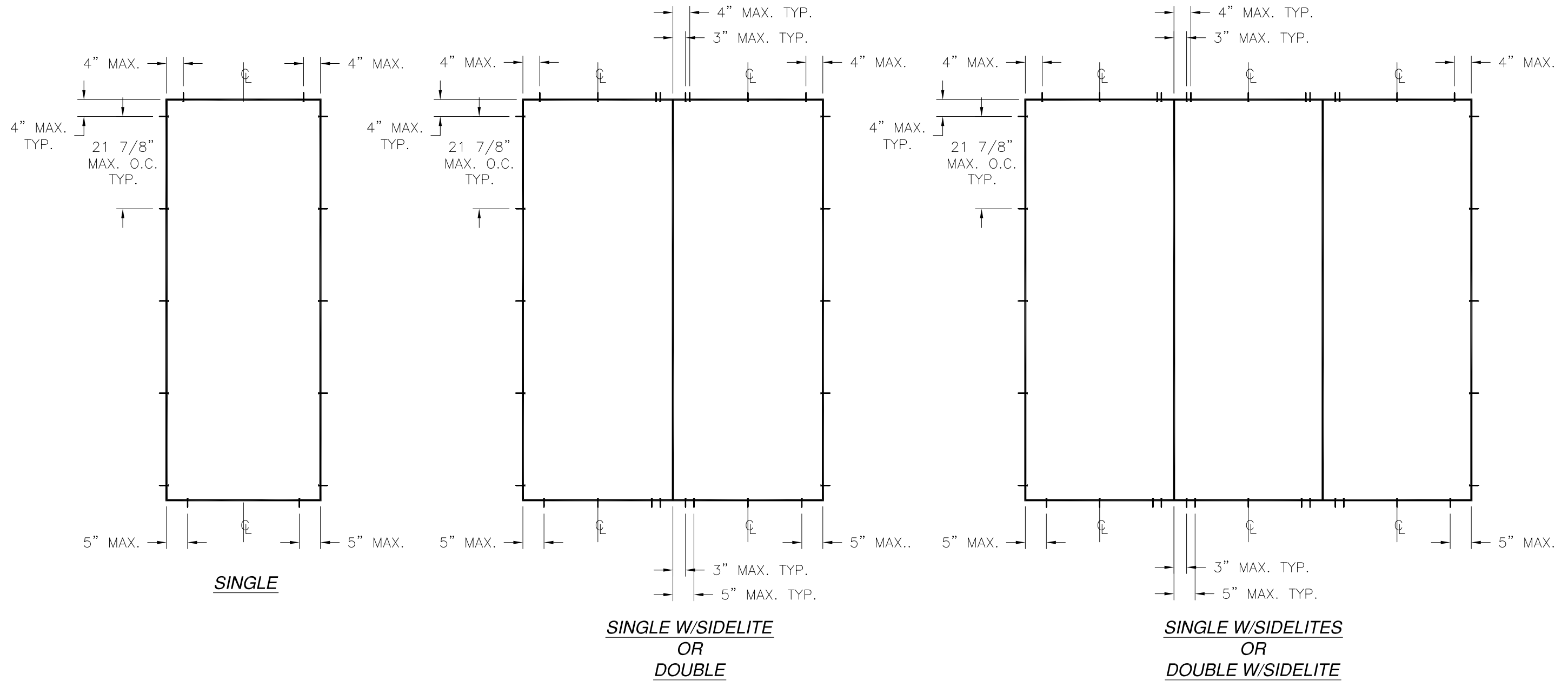
NAN YA PLASTICS CORP. USA
8989 NORTH LOOP EAST
HOUSTON, TX 77029

SERIES 8'0 3/4 LITE SIDE HINGED FIBERGLASS PATIO DOOR W/ & W/O SIDELITES
ADDITIONAL CONFIGURATIONS AND HARDWARE

DRAWN: TJH	DWG NO. 08-00999	REV C
SCALE NTS	DATE 05/03/10	SHEET 2 OF 6



REVISIONS			
REV	DESCRIPTION	DATE	APPROVED
A	REVISED NOTES AND GLAZING DETAIL	03/12/12	R.L.
B	ADDED ANCHOR NOTE	05/29/12	R.L.
C	ADDED EDGE DISTANCES	11/05/14	R.L.



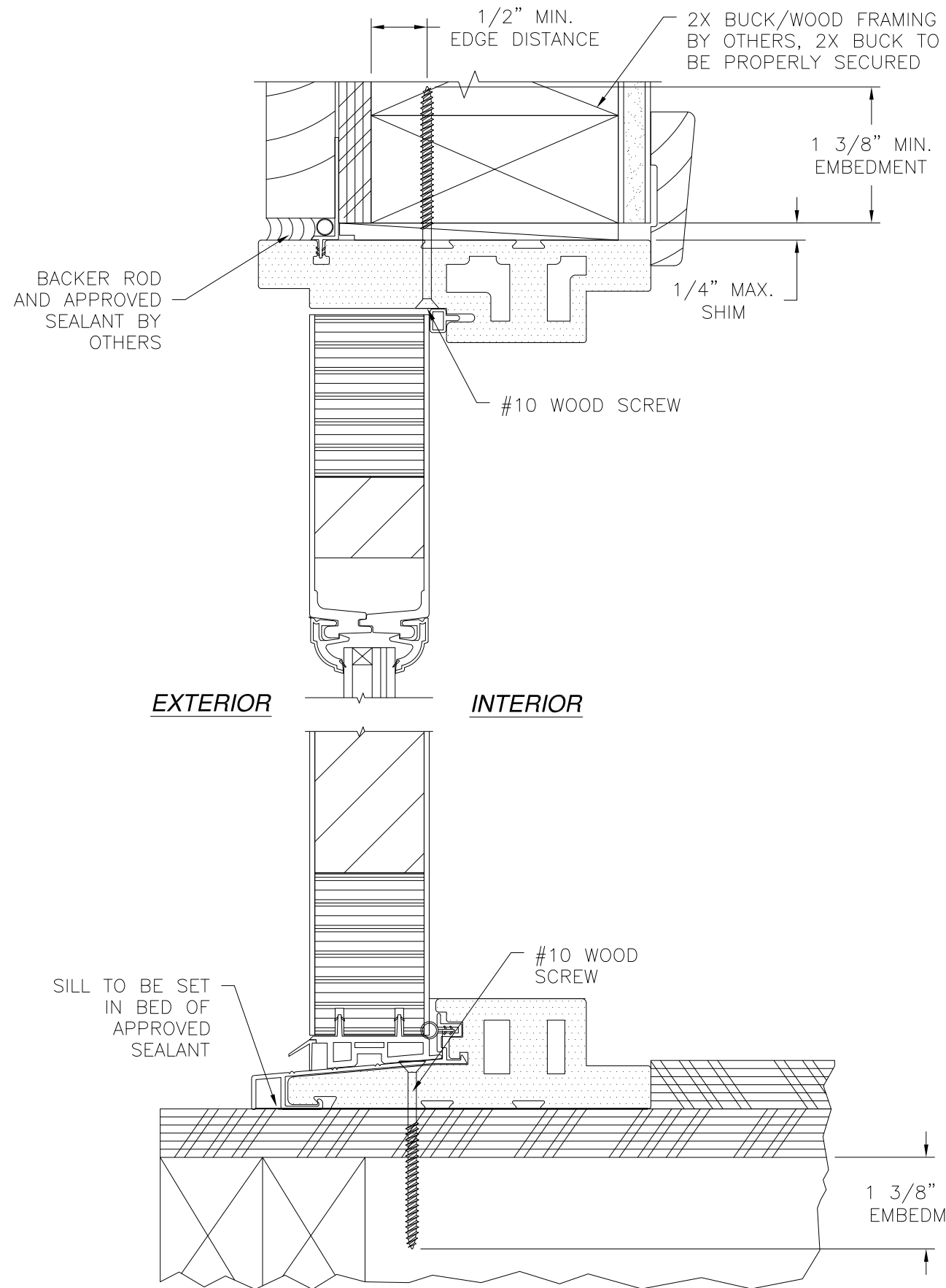
SIGNED: 11/06/2014

NAN YA PLASTICS CORP. USA
 8989 NORTH LOOP EAST
 HOUSTON, TX 77029

SERIES 8'0 3/4 LITE SIDE HINGED FIBERGLASS
 PATIO DOOR W/ & W/O SIDELITES
 ANCHORING LAYOUTS

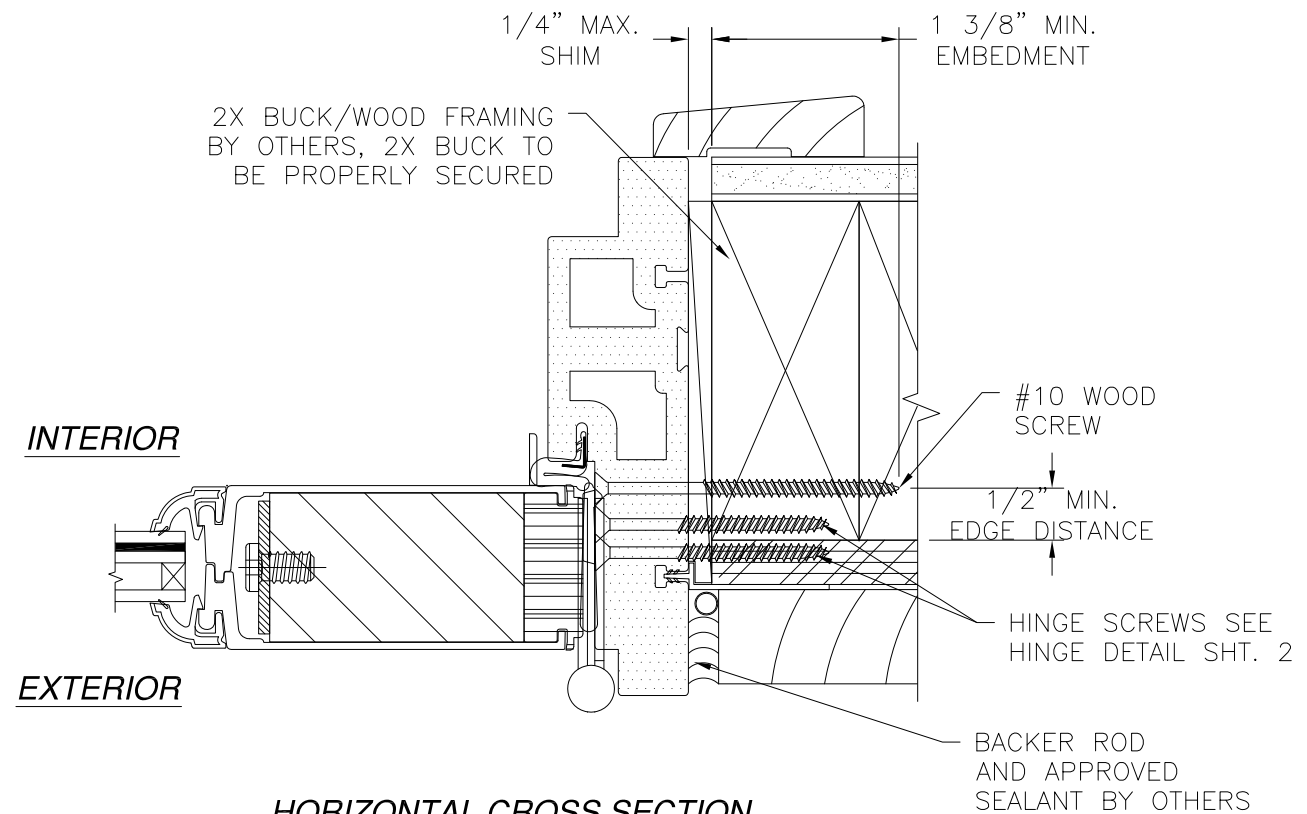
DRAWN: TJH	DWG NO. 08-00999	REV C
SCALE NTS	DATE 05/03/10	SHEET 3 OF 6





VERTICAL CROSS SECTION
 DOOR SHOWN, SIDELITE SIMILAR
 2X BUCK/WOOD FRAMING INSTALLATION

REVISIONS			
REV	DESCRIPTION	DATE	APPROVED
A	REVISED NOTES AND GLAZING DETAIL	03/12/12	R.L.
B	ADDED ANCHOR NOTE	05/29/12	R.L.
C	ADDED EDGE DISTANCES	11/05/14	R.L.



HORIZONTAL CROSS SECTION
HINGE JAMB DETAIL
 2X BUCK/WOOD FRAMING INSTALLATION

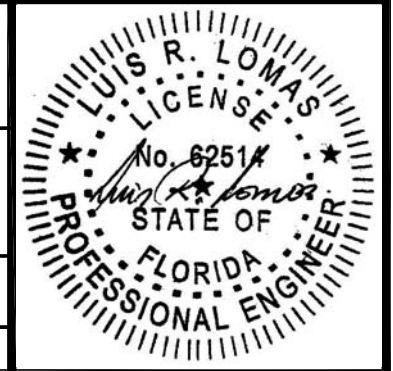
NOTE:
 INTERIOR AND EXTERIOR FINISHES, BY OTHERS, NOT SHOWN FOR CLARITY.
 ANCHORS MAY BE INSTALLED INSIDE OR OUTSIDE FRAME.

SIGNED: 11/06/2014

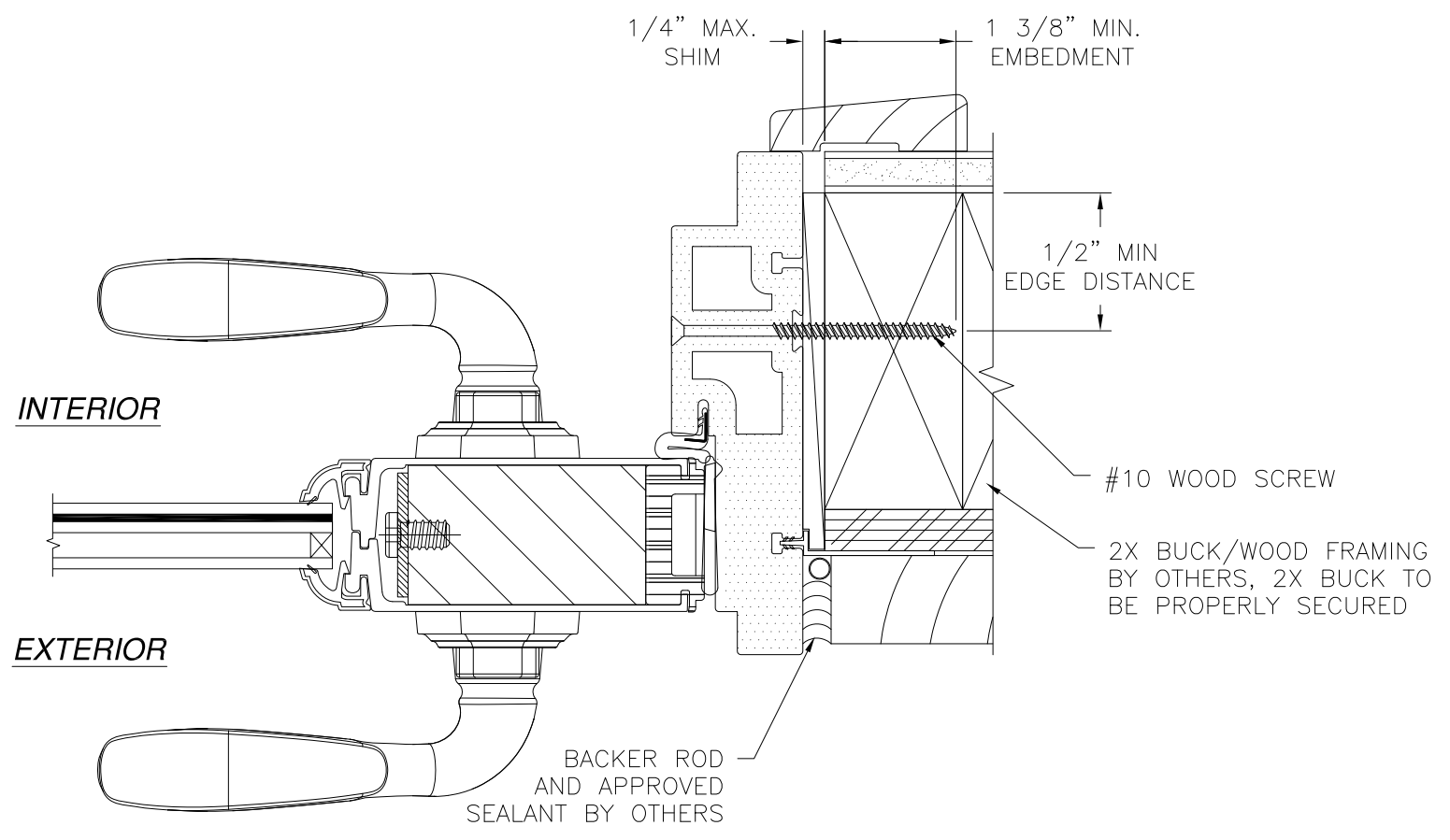
NAN YA PLASTICS CORP. USA
 8989 NORTH LOOP EAST
 HOUSTON, TX 77029

SERIES 8'0 3/4 LITE SIDE HINGED FIBERGLASS PATIO DOOR W/ & W/O SIDELITES INSTALLATION DETAILS

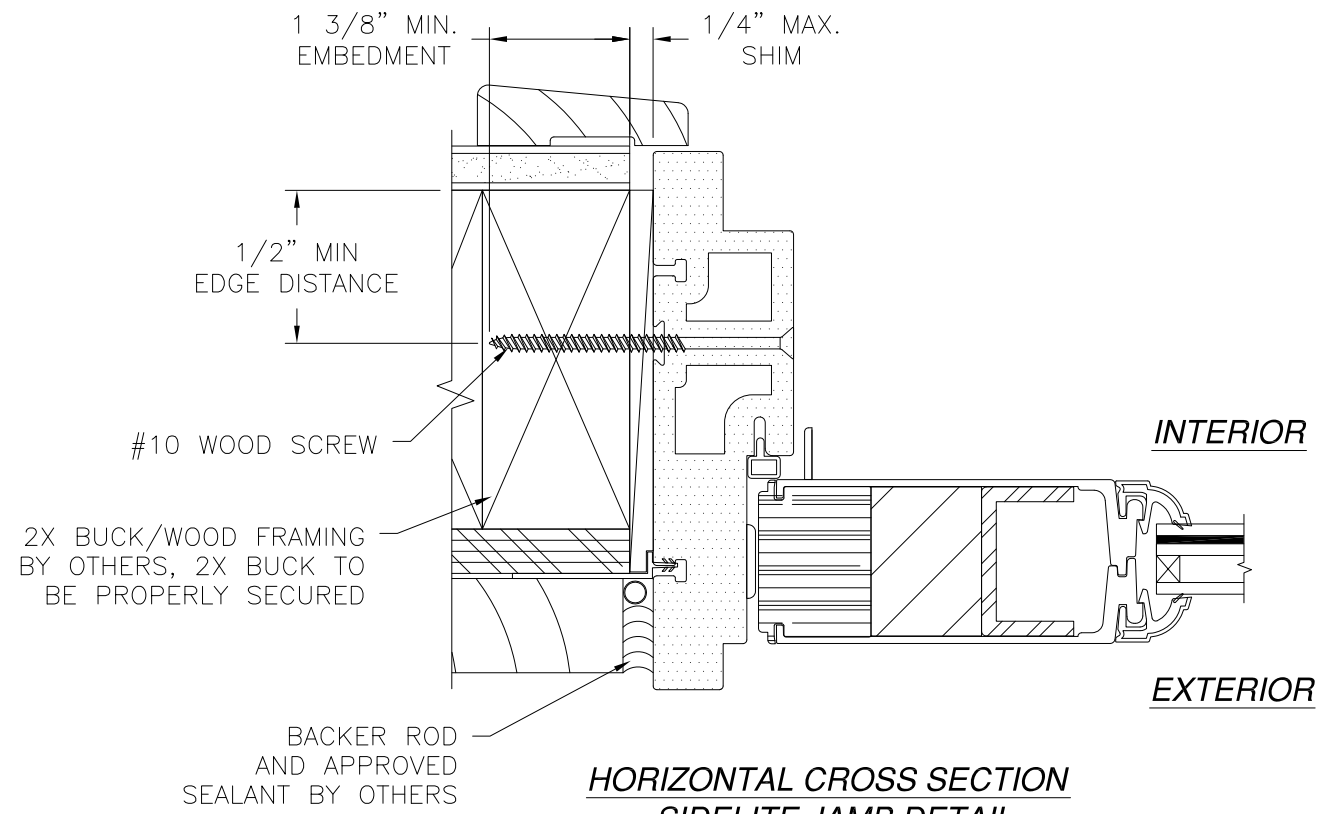
DRAWN: TJH	DWG NO. 08-00999	REV C
SCALE NTS	DATE 05/03/10	SHEET 4 OF 6



REVISIONS			
REV	DESCRIPTION	DATE	APPROVED
A	REVISED NOTES AND GLAZING DETAIL	03/12/12	R.L.
B	ADDED ANCHOR NOTE	05/29/12	R.L.
C	ADDED EDGE DISTANCES	11/05/14	R.L.



**HORIZONTAL CROSS SECTION
STRIKE JAMB DETAIL**
2X BUCK/WOOD FRAMING INSTALLATION

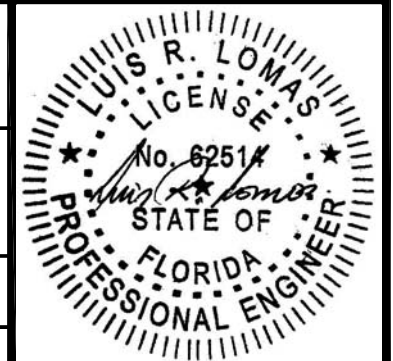


**HORIZONTAL CROSS SECTION
SIDELITE JAMB DETAIL**
2X BUCK/WOOD FRAMING INSTALLATION

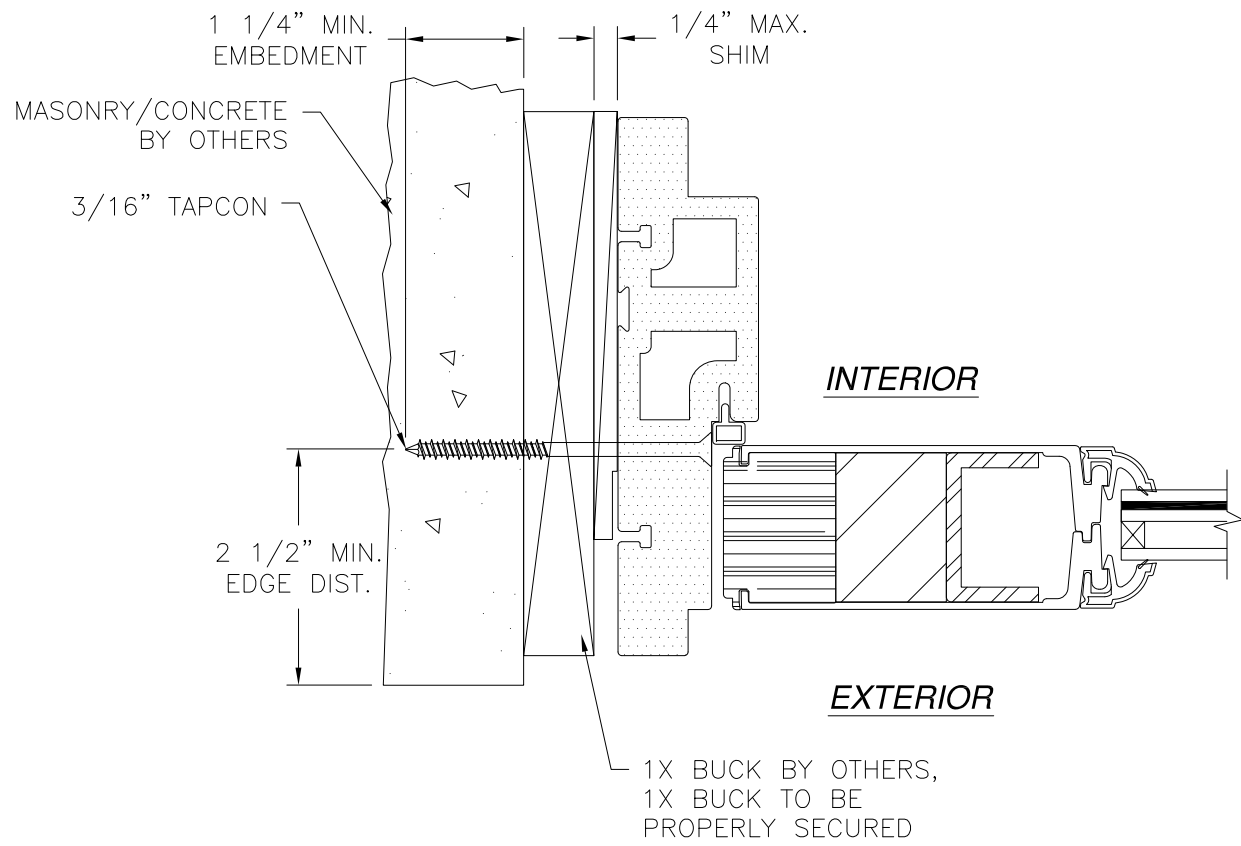
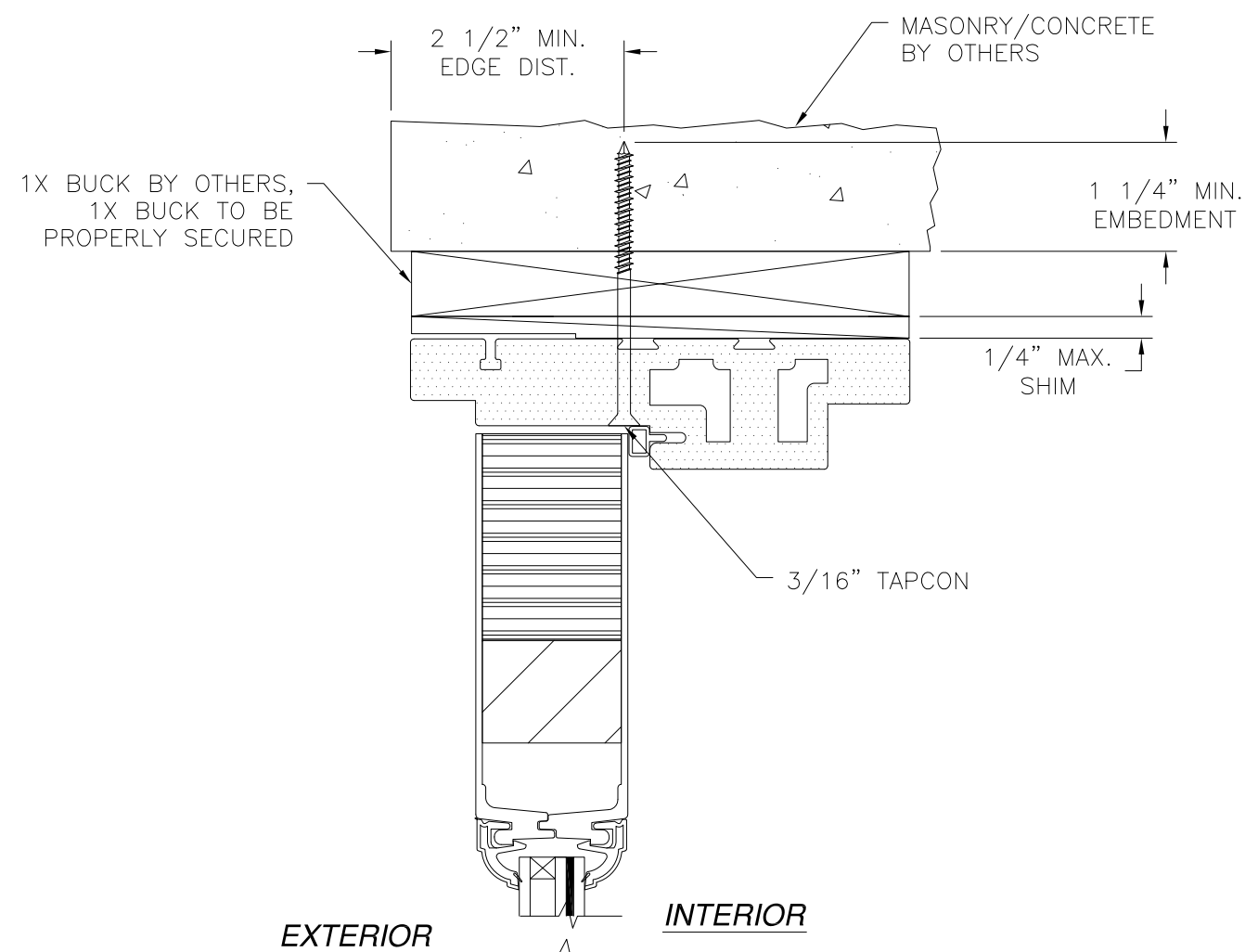
NOTE:
INTERIOR AND EXTERIOR FINISHES, BY OTHERS, NOT SHOWN FOR CLARITY.
ANCHORS MAY BE INSTALLED INSIDE OR OUTSIDE FRAME.

SIGNED: 11/06/2014

<p>NAN YA PLASTICS CORP. USA 8989 NORTH LOOP EAST HOUSTON, TX 77029</p>		
<p>SERIES 8'0 3/4 LITE SIDE HINGED FIBERGLASS PATIO DOOR W/ & W/O SIDELITES INSTALLATION DETAILS</p>		
<p>DRAWN: TJH</p>	<p>DWG NO. 08-00999</p>	<p>REV C</p>
<p>SCALE NTS</p>	<p>DATE 05/03/10</p>	<p>SHEET 5 OF 6</p>



REVISIONS			
REV	DESCRIPTION	DATE	APPROVED
A	REVISED NOTES AND GLAZING DETAIL	03/12/12	R.L.
B	ADDED ANCHOR NOTE	05/29/12	R.L.
C	ADDED EDGE DISTANCES	11/05/14	R.L.



EXTERIOR **INTERIOR**

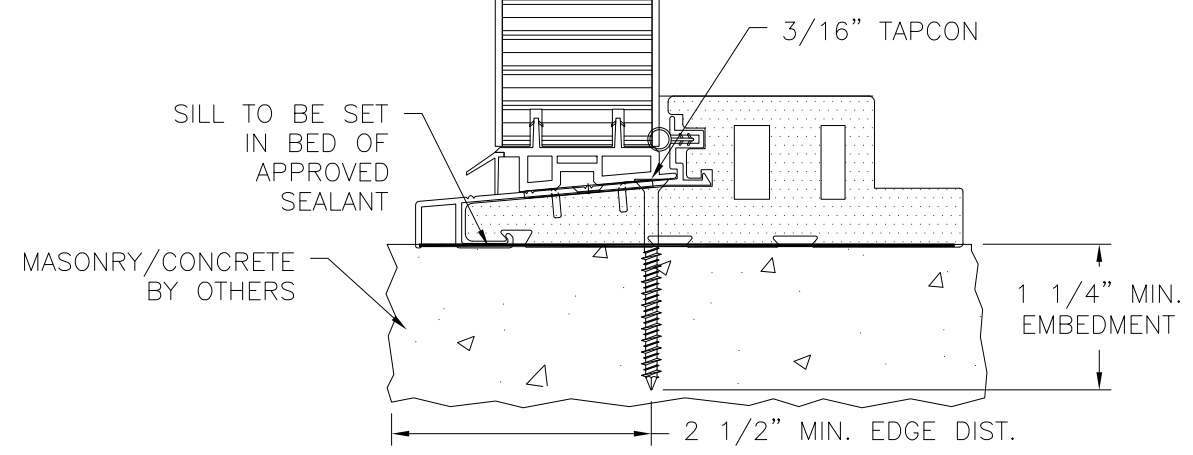
INTERIOR

EXTERIOR

MASONRY/CONCRETE INSTALLATION
 DOOR JAMB SHOWN, SIDELITE JAMB SIMILAR

NOTE:
 INTERIOR AND EXTERIOR FINISHES, BY OTHERS, NOT SHOWN FOR CLARITY.
 ANCHORS MAY BE INSTALLED INSIDE OR OUTSIDE FRAME.

SIGNED: 11/06/2014



MASONRY/CONCRETE INSTALLATION
 DOOR SHOWN, SIDELITE SIMILAR

NAN YA PLASTICS CORP. USA 8989 NORTH LOOP EAST HOUSTON, TX 77029		
SERIES 8'0 3/4 LITE SIDE HINGED FIBERGLASS PATIO DOOR W/ & W/O SIDELITES INSTALLATION DETAILS		
DRAWN: TJH	DWG NO. 08-00999	REV C
SCALE NTS	DATE 05/03/10	SHEET 6 OF 6

