

NEUMA CLASSIC PVC INSWING GLAZED PATIO DOOR
EXTERIOR VIEW

WHERE WATER RESISTANCE IS REQUIRED

| DESIGN PRESSURE RATING | IMPACT RATING |
|-------------------------|---------------|
| +35.0 PSF - 50.0 PSF | NONE |

WHERE WATER RESISTANCE IS NOT REQUIRED

| DESIGN PRESSURE RATING | IMPACT RATING |
|------------------------|---------------|
| ±50PSF | NONE |

| REVISIONS | | | |
|-----------|-------------|------|----------|
| REV | DESCRIPTION | DATE | APPROVED |
| | | | |

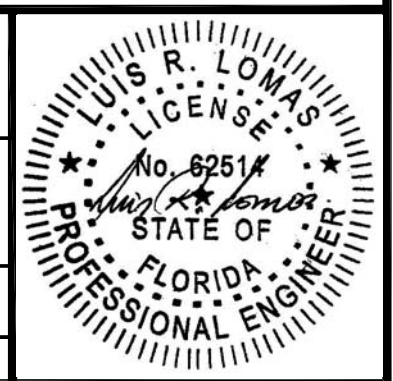
- NOTES:
- 1) THE PRODUCT SHOWN HEREIN IS DESIGNED AND MANUFACTURED TO COMPLY WITH REQUIREMENTS OF FLORIDA BUILDING CODE.
 - 2) WOOD FRAMING OPENING TO BE DESIGNED AND ANCHORED TO PROPERLY TRANSFER ALL LOADS TO STRUCTURE. WOOD FRAMING OPENING IS THE RESPONSIBILITY OF THE ARCHITECT OR ENGINEER OF RECORD.
 - 3) APPROVED IMPACT PROTECTIVE SYSTEM IS REQUIRED FOR THIS PRODUCT IN WIND BORNE DEBRIS REGIONS.
 - 4) UNITS MUST BE GLAZED PER ASTM E1300.
 - 5) ALLOWABLE STRESS INCREASE OF 1/3 WAS NOT USED IN THE DESIGN OF THE PRODUCT SHOWN HEREIN. WIND LOAD DURATION FACTOR Cd=1.6 WAS USED FOR WOOD ANCHOR CALCULATIONS.
 - 6) SHIM AS REQUIRED AT EACH INSTALLATION ANCHOR WITH LOAD BEARING SHIM. SHIM WHERE SPACE OF 1/16" OR GREATER OCCURS. MAXIMUM ALLOWABLE SHIM STACK TO BE 1/4".
 - 7) FOR ANCHORING INTO 2X BUCK OR WOOD FRAMING USE #10 WOOD SCREW OF SUFFICIENT LENGTH TO ACHIEVE A 1 3/8" MINIMUM EMBEDMENT INTO SUBSTRATE. LOCATE ANCHORS AS SHOWN IN ANCHORING LAYOUT AND INSTALLATION DETAILS.
 - 8) FOR ANCHORING INTO MASONRY USE 3/16" ITW TAPCONS WITH SUFFICIENT LENGTH TO ACHIEVE A 1 1/4" MINIMUM EMBEDMENT INTO SUBSTRATE WITH 2 5/8" MINIMUM EDGE DISTANCE. LOCATE ANCHORS AS SHOWN IN ELEVATIONS AND INSTALLATION DETAILS.
 - 9) ALL FASTENERS TO BE CORROSION RESISTANT.
 - 10) INSTALLATION ANCHOR CAPACITIES FOR PRODUCTS HEREIN ARE BASED ON SUBSTRATE MATERIAL WITH THE FOLLOWING PROPERTIES:
A. WOOD – G=0.42 MINIMUM SPECIFIC GRAVITY.
B. CONCRETE – MINIMUM COMPRESSIVE STRENGTH OF 3,192 PSI.
C. MASONRY – STRENGTH CONFORMANCE TO ASTM C-90, GRADE N, TYPE 1 (OR GREATER).
 - 11) FRAME JAMB AND HEAD MATERIAL: CO-EXTRUDED PVC FOAM 1 1/2" THICK.
 - 12) FRAME SILL MATERIAL: CO-EXTRUDED PVC FOAM, 1 1/4" THICK INSWING AND 1 5/8" THICK OUTSWING, WITH ALUMINUM CLADDING .063" THICK.
 - 13) DOOR PANEL AND SIDELITE MATERIAL: RIGID PVC SKIN .031" THICK OVER A PVC FOAM CORE WITH WOOD REINFORCEMENTS.
 - 14) APPROVED CONFIGURATIONS: X, OX AND XO INSWING AND OUTSWING.
 - 15) MAX. DOOR PANEL AND SIDELITE D.L.O.: 25" x 66".
 - 16) HINGE LOCATIONS FROM BOTTOM OF PANEL UP: 10", 42" AND 73 1/2".

| TABLE OF CONTENTS | |
|-------------------|---|
| SHEET NO. | DESCRIPTION |
| 1 | INSWING ELEVATIONS ANCHORING AND NOTES |
| 2 | OUTSWING ELEVATIONS, ANCHORING AND HARDWARE |
| 3 – 4 | INSWING INSTALLATION DETAILS |
| 5 – 6 | OUTSWING INSTALLATION DETAILS |

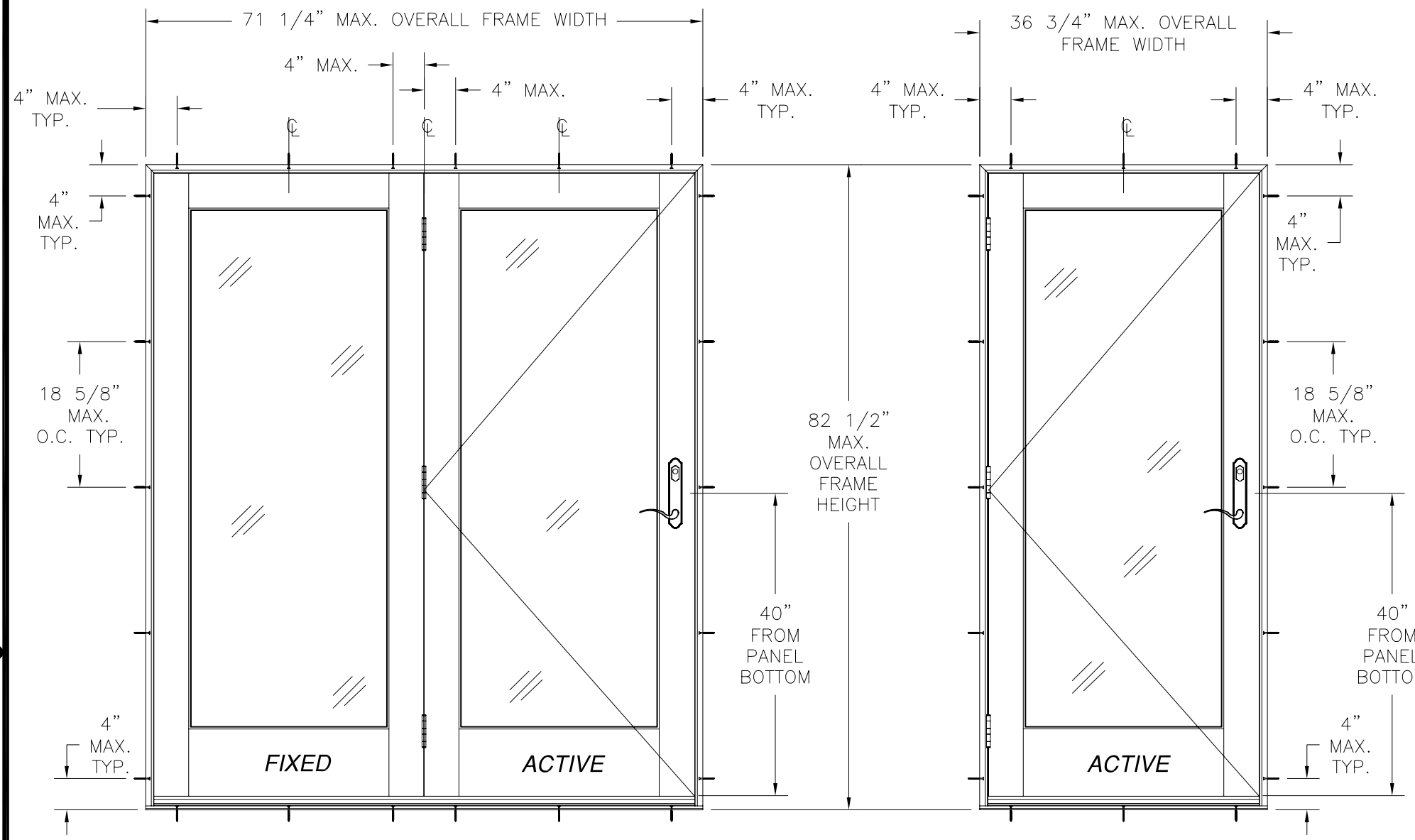
NAN YA PLASTICS CORP. USA
8989 NORTH LOOP EAST
HOUSTON, TX 77029

NEUMA CLASSIC PVC GLAZED PATIO DOOR
INSWING/OUTSWING NON-IMPACT
INSWING ELEVATIONS, ANCHORING AND NOTES

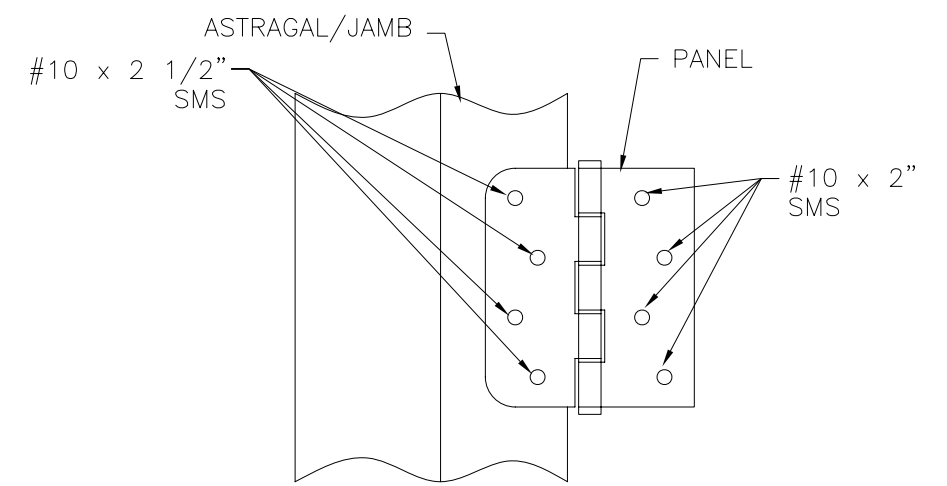
| | | |
|---------------|---------------------|-----------------|
| DRAWN: TJH | DWG NO. 08-00872 | REV - |
| SCALE NTS | DATE 10/23/09 | SHEET 1 OF 6 |



| REVISIONS | | | |
|-----------|-------------|------|----------|
| REV | DESCRIPTION | DATE | APPROVED |
| | | | |



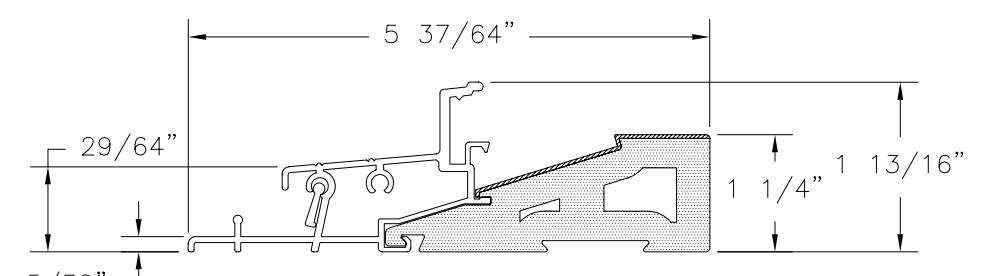
| HARDWARE SCHEDULE | |
|-------------------|--|
| A. | 3-POINT LOCK HANDLE ASSEMBLY NINGBO MICOTA LOCKS |
| B. | (3) 4" x 4 1/4" BUTT HINGES BY WENZHOU LONGTAI HINGES |
| C. | EXTRUDED ALUMINUM & PVC FOAM ASTRAGAL BY NAN YA PLASTICS |



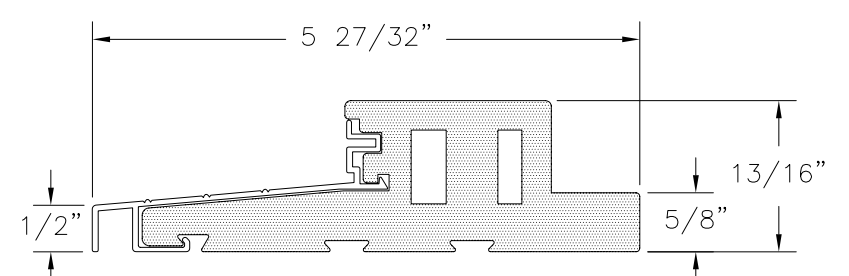
NEUMA CLASSIC PVC OUTSWING GLAZED PATIO DOOR
EXTERIOR VIEW

| DESIGN PRESSURE RATING | IMPACT RATING |
|------------------------|---------------|
| ±50PSF | NONE |

HINGE INSTALLATION DETAIL



INSWING DOOR SILL DETAIL

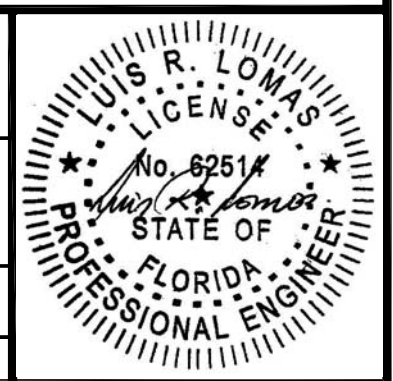


OUTSWING DOOR SILL DETAIL

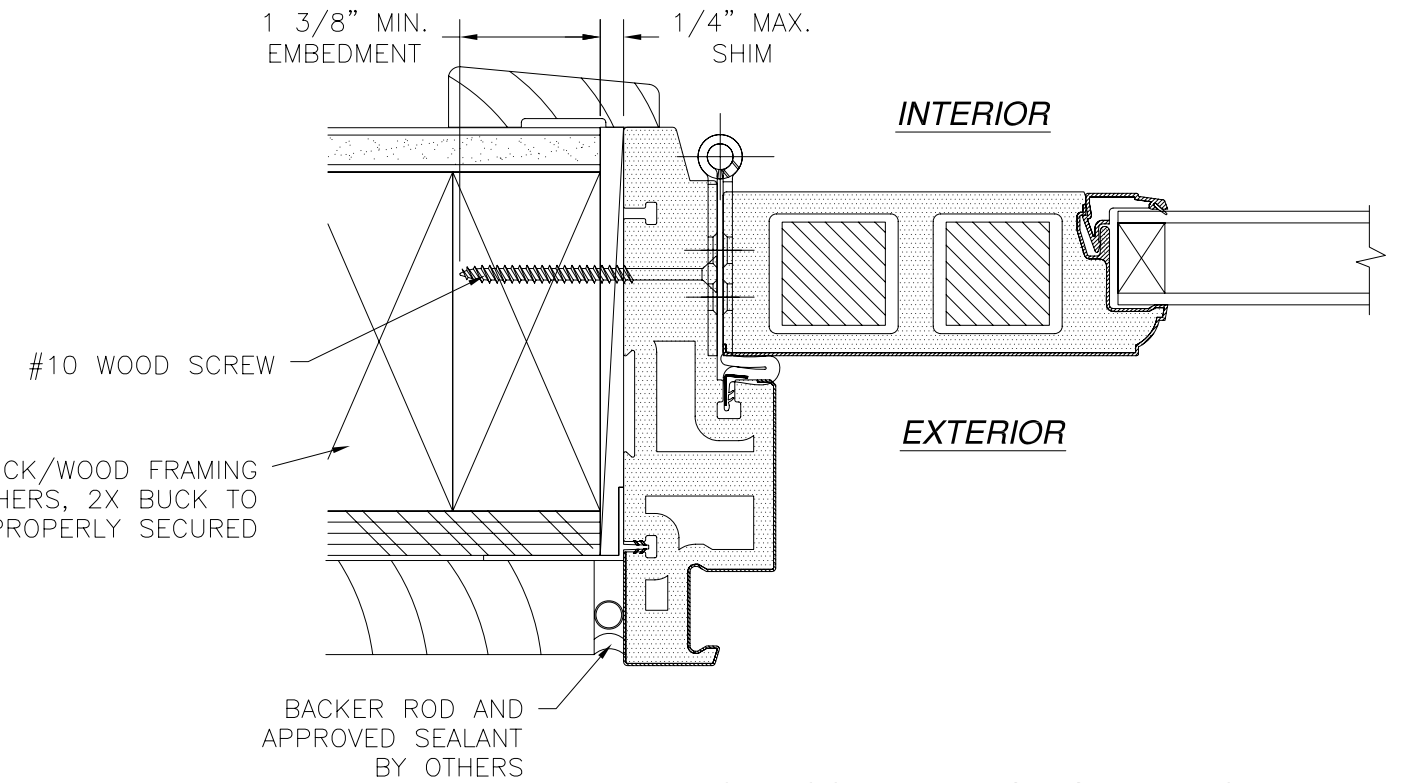
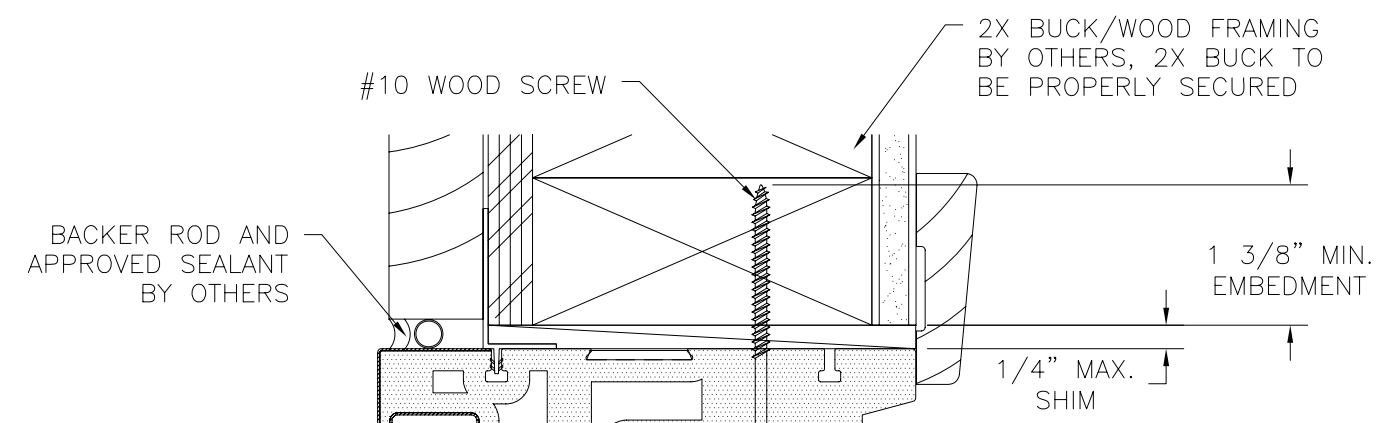
NAN YA PLASTICS CORP. USA
8989 NORTH LOOP EAST
HOUSTON, TX 77029

NEUMA CLASSIC PVC GLAZED PATIO DOOR
INSWING/OUTSWING NON-IMPACT
OUTSWING ELEVATIONS, ANCHORING AND HARDWARE

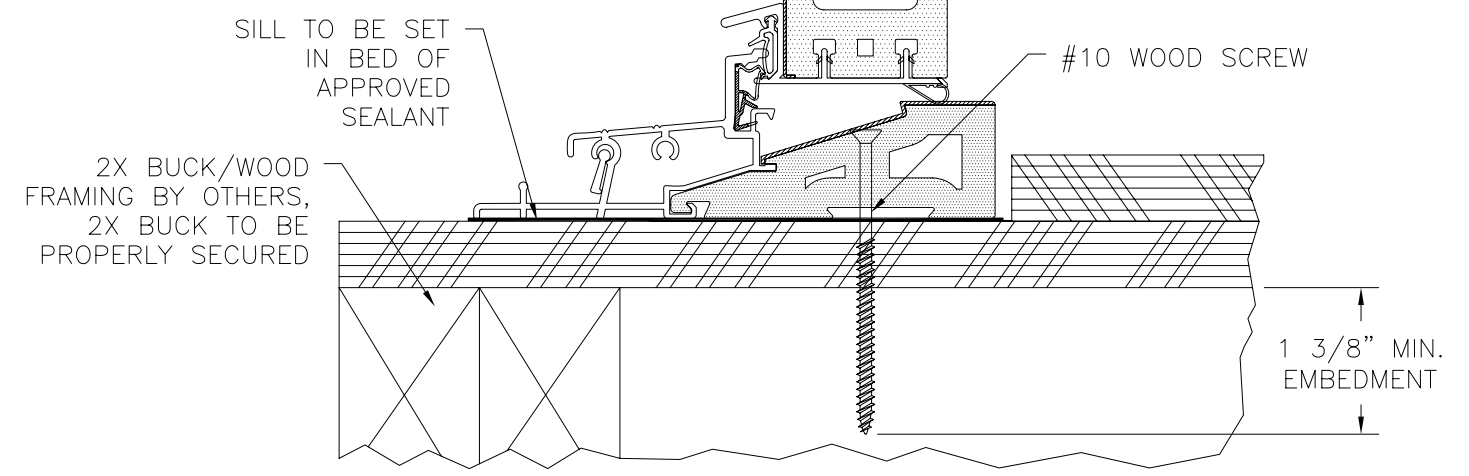
| | | |
|---------------|---------------------|--------------|
| DRAWN: TJH | DWG NO. 08-00872 | REV - |
| SCALE NTS | DATE 10/23/09 | SHEET 2 OF 6 |



| REVISIONS | | | |
|-----------|-------------|------|----------|
| REV | DESCRIPTION | DATE | APPROVED |
| | | | |



2X BUCK/WOOD FRAMING INSTALLATION
INSWING HINGE JAMB SHOWN, SIDELITE JAMB SIMILAR

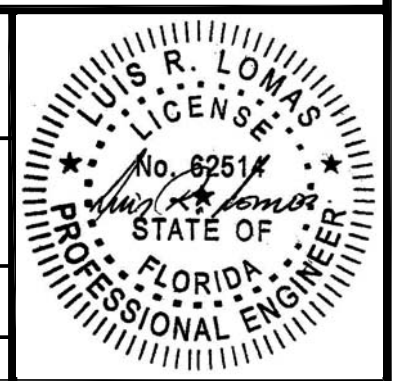


2X BUCK/WOOD FRAMING INSTALLATION
INSWING DOOR SHOWN, INSWING SIDELITE SIMILAR

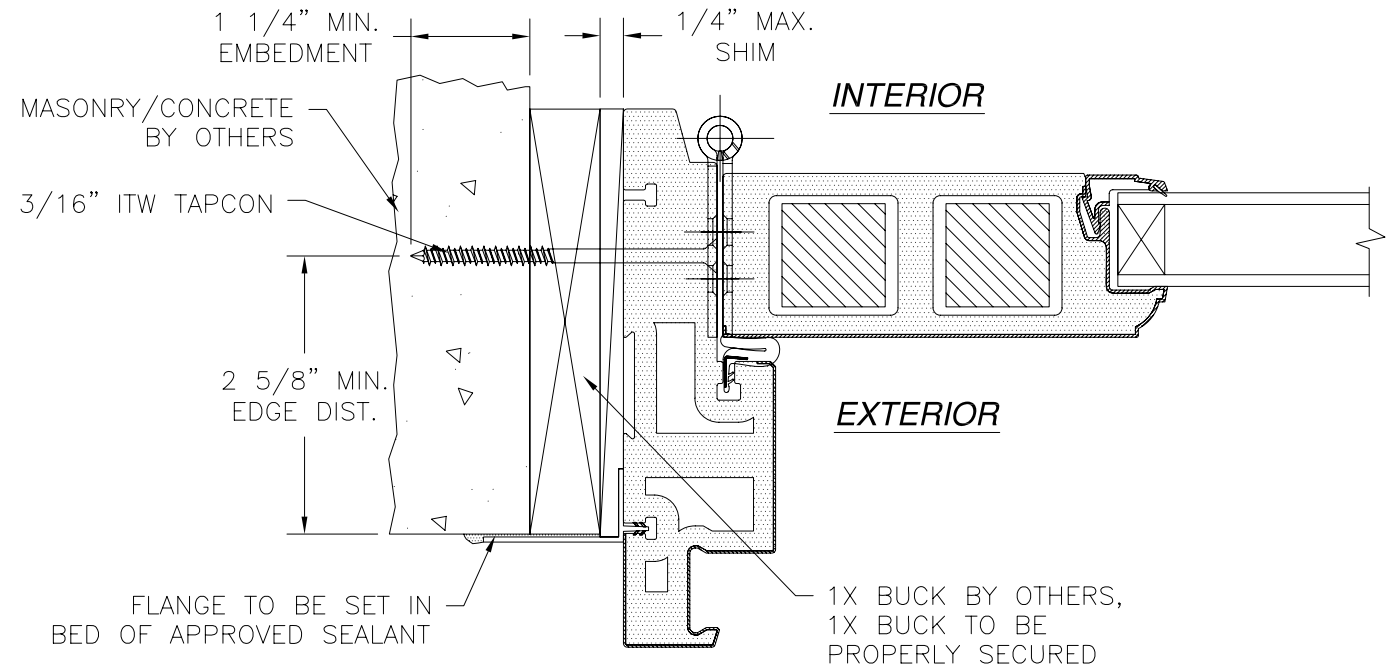
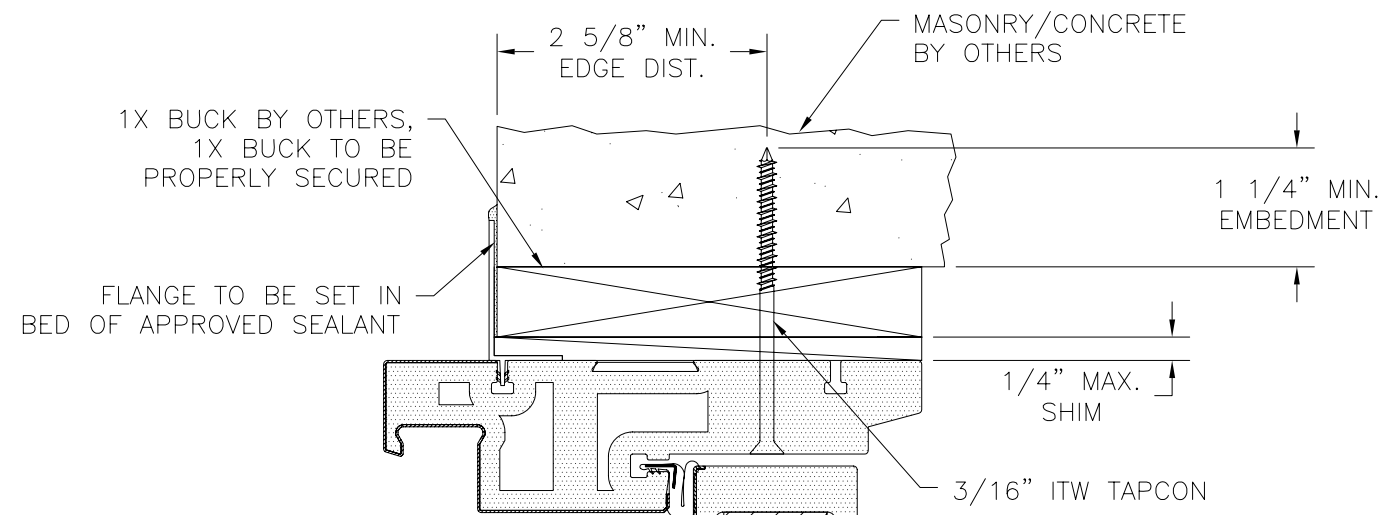
NAN YA PLASTICS CORP. USA
8989 NORTH LOOP EAST
HOUSTON, TX 77029

NEUMA CLASSIC PVC GLAZED PATIO DOOR
INSWING/OUTSWING NON-IMPACT
INSWING INSTALLATION DETAILS

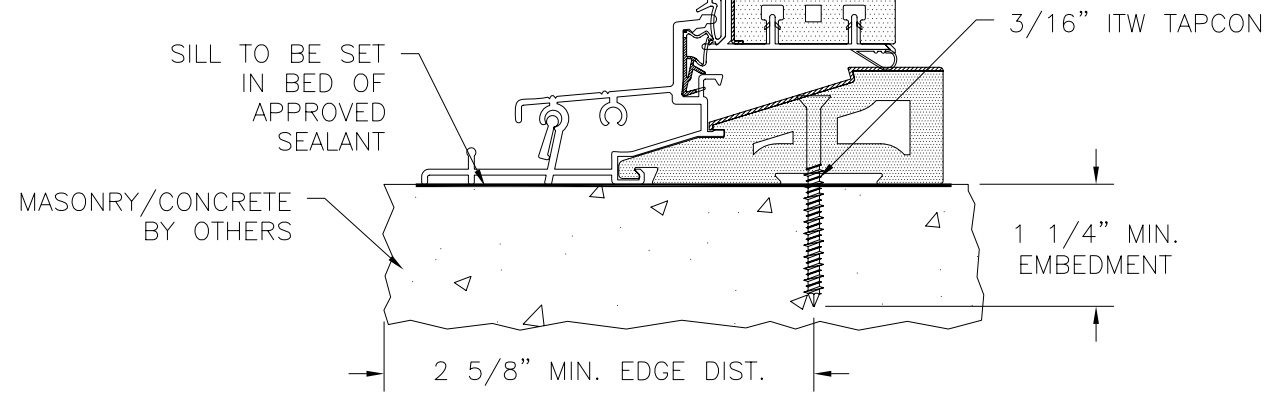
| | | |
|---------------|---------------------|-----------------|
| DRAWN: TJH | DWG NO. 08-00872 | REV - |
| SCALE NTS | DATE 10/23/09 | SHEET 3 OF 6 |



| REVISIONS | | | |
|-----------|-------------|------|----------|
| REV | DESCRIPTION | DATE | APPROVED |
| | | | |

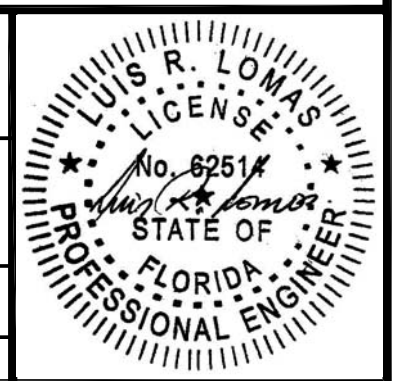


MASONRY/CONCRETE INSTALLATION
INSWING HINGE JAMB SHOWN, SIDELITE JAMB SIMILAR

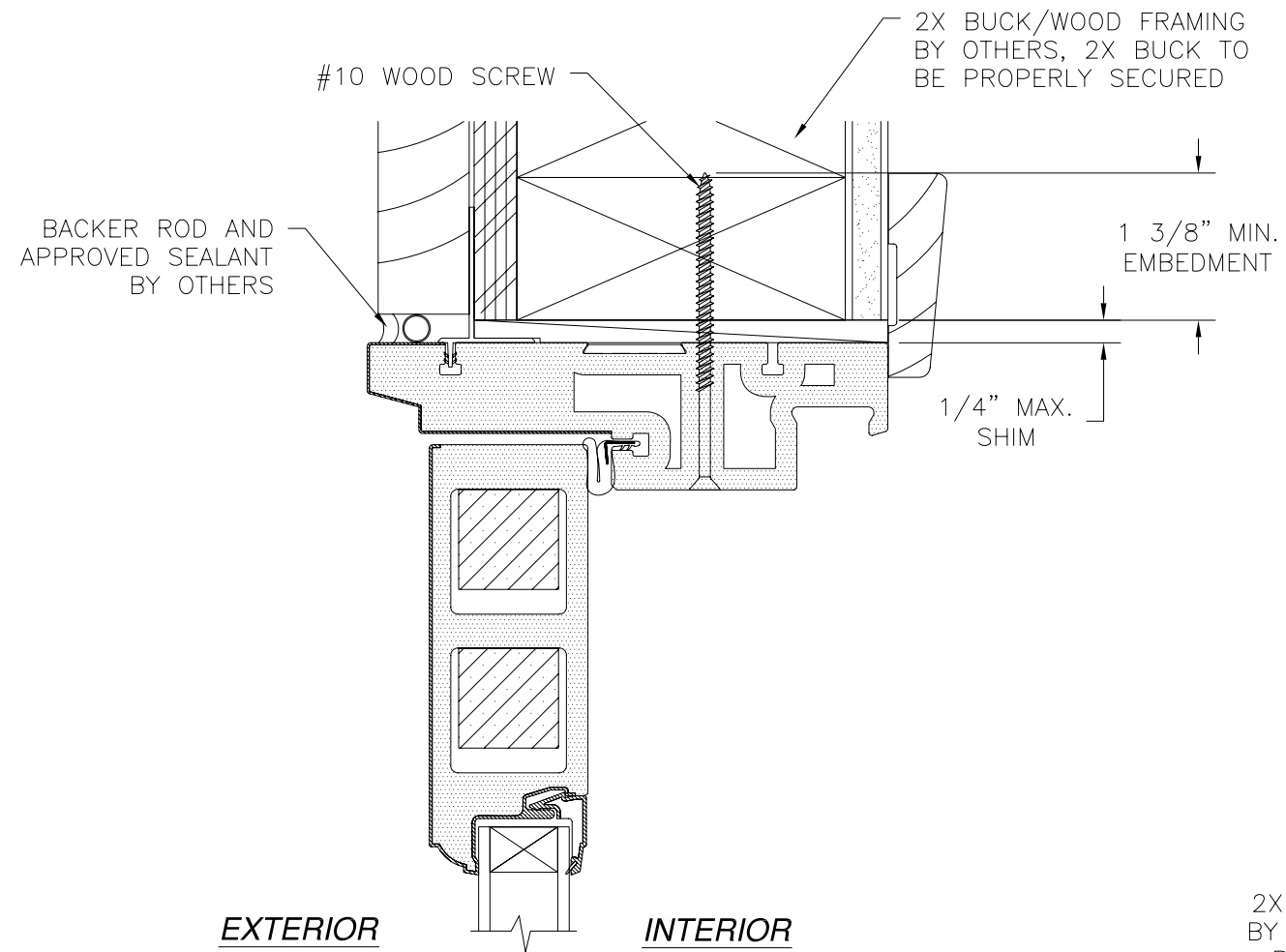


MASONRY/CONCRETE INSTALLATION
INSWING DOOR SHOWN, INSWING SIDELITE SIMILAR

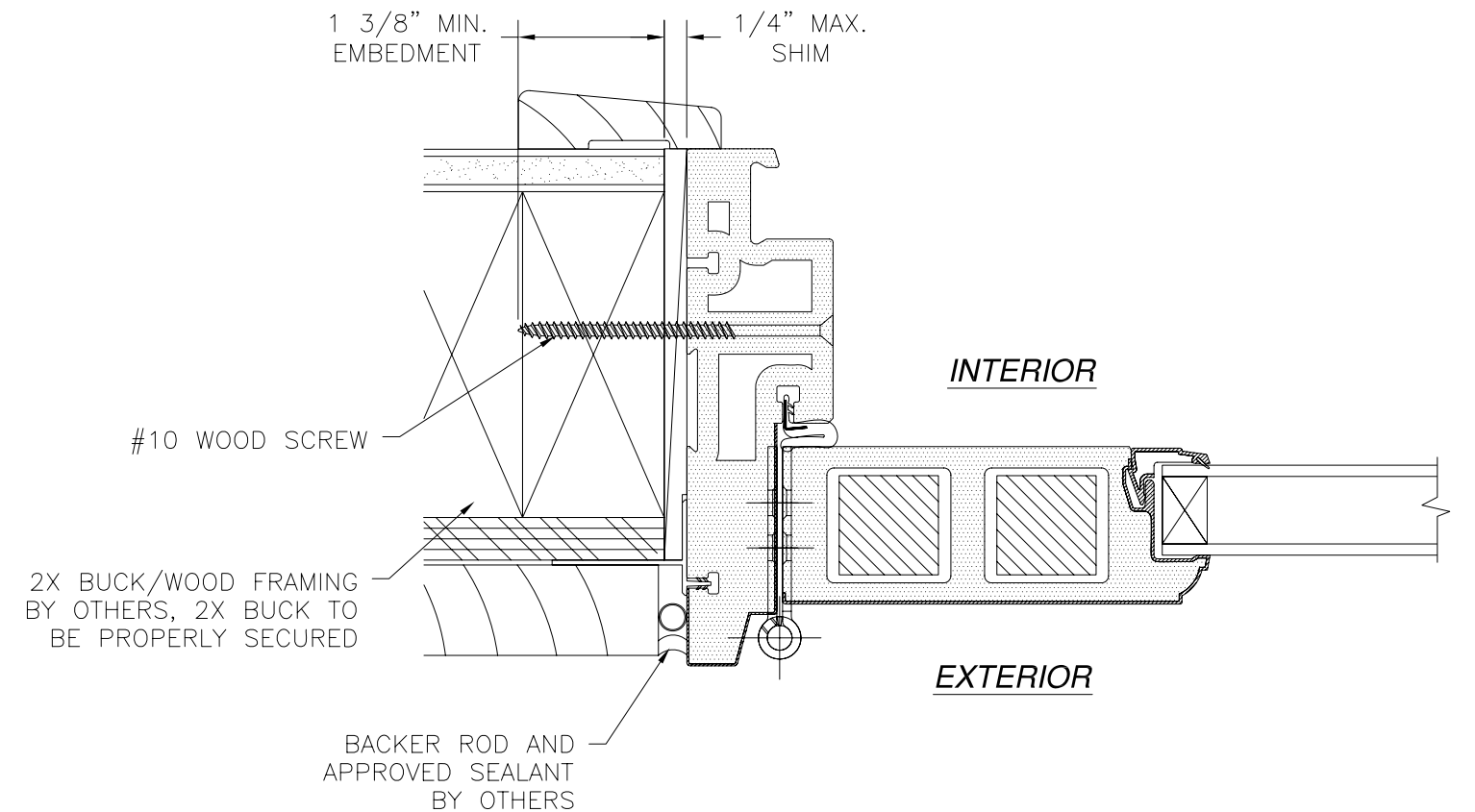
| | | |
|---|-----------------------------|---------------------|
| <p>NAN YA PLASTICS CORP. USA 8989 NORTH LOOP EAST HOUSTON, TX 77029</p> | | |
| <p>NEUMA CLASSIC PVC GLAZED PATIO DOOR INSWING/OUTSWING NON-IMPACT INSWING INSTALLATION DETAILS</p> | | |
| <p>DRAWN: TJH</p> | <p>DWG NO. 08-00872</p> | <p>REV -</p> |
| <p>SCALE NTS</p> | <p>DATE 10/23/09</p> | <p>SHEET 4 OF 6</p> |



| REVISIONS | | | |
|-----------|-------------|------|----------|
| REV | DESCRIPTION | DATE | APPROVED |
| | | | |



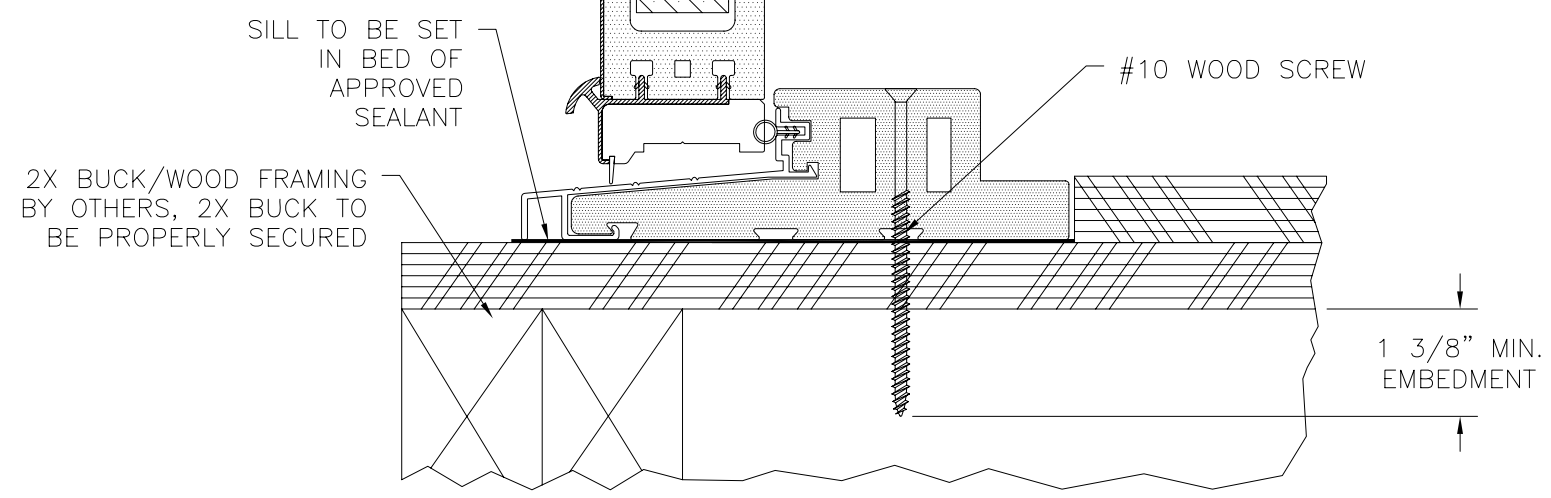
EXTERIOR **INTERIOR**



INTERIOR

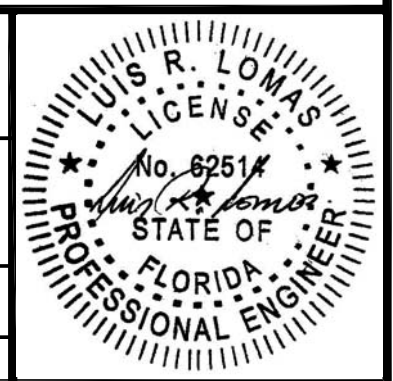
EXTERIOR

2X BUCK/WOOD FRAMING INSTALLATION
 OUTSWING STRIKE JAMB SHOWN, SIDELITE JAMB SIMILAR

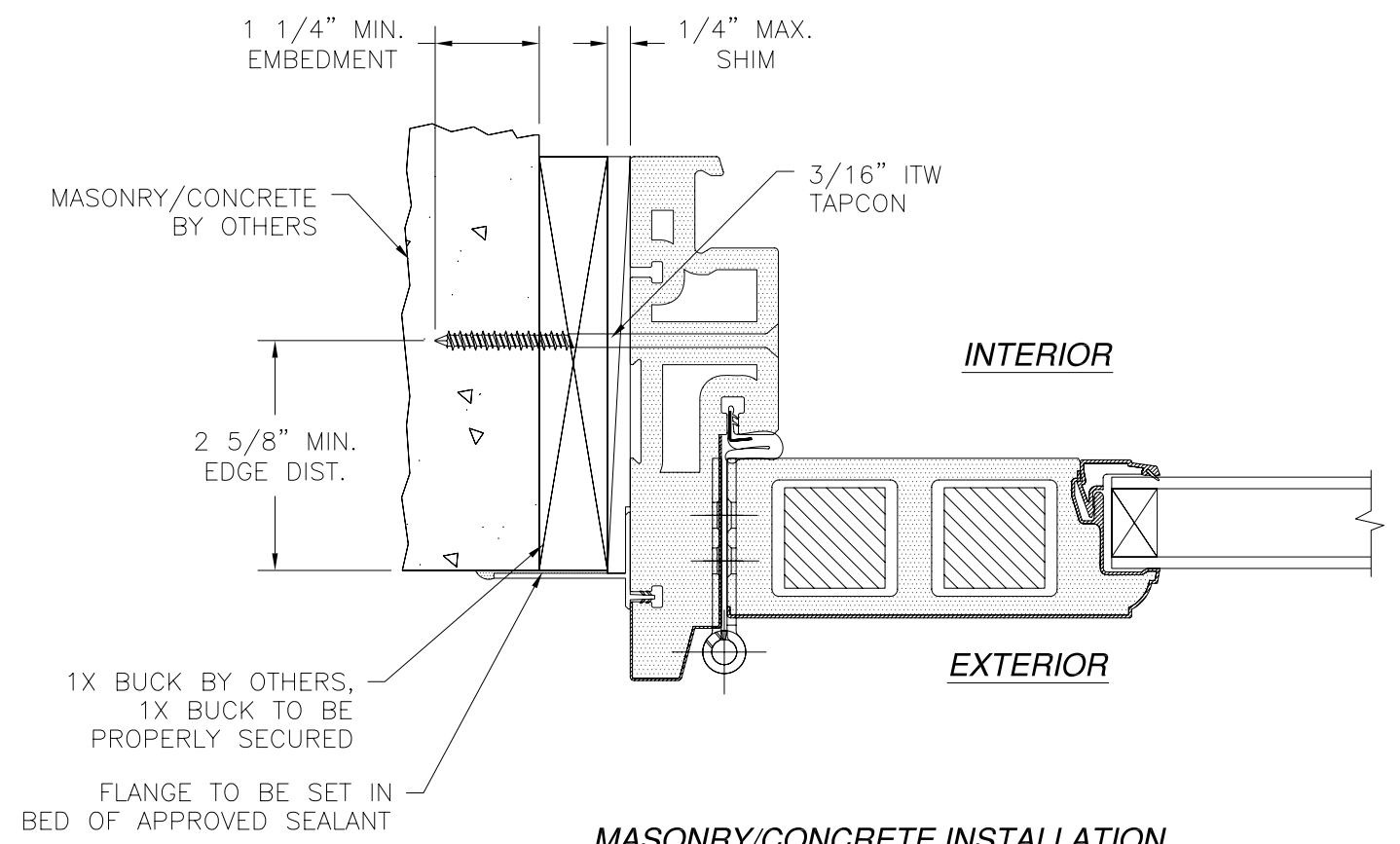
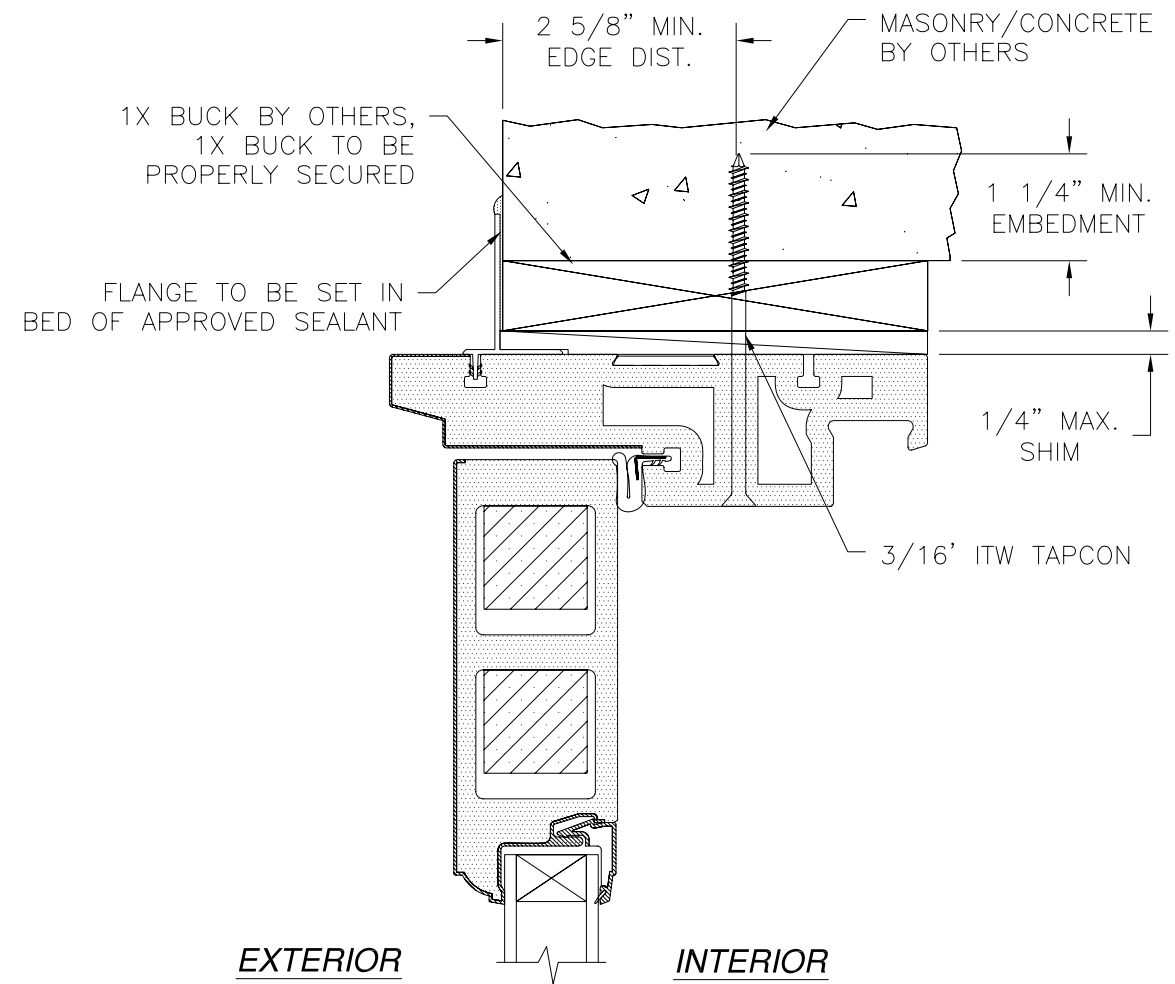


2X BUCK/WOOD FRAMING INSTALLATION
 OUTSWING DOOR SHOWN, OUTSWING SIDELITE SIMILAR

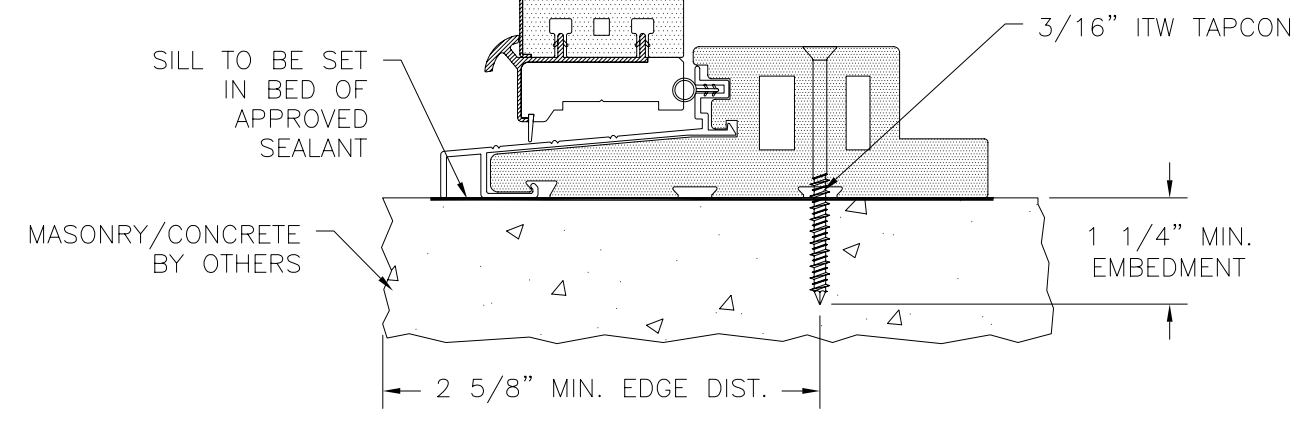
| | | |
|---|---------------------|--------------|
| NAN YA PLASTICS CORP. USA 8989 NORTH LOOP EAST HOUSTON, TX 77029 | | |
| NEUMA CLASSIC PVC GLAZED PATIO DOOR INSWING/OUTSWING NON-IMPACT OUTSWING INSTALLATION DETAILS | | |
| DRAWN: TJH | DWG NO. 08-00872 | REV - |
| SCALE NTS | DATE 10/23/09 | SHEET 5 OF 6 |



| REVISIONS | | | |
|-----------|-------------|------|----------|
| REV | DESCRIPTION | DATE | APPROVED |
| | | | |



MASONRY/CONCRETE INSTALLATION
OUTSWING STRIKE JAMB SHOWN, SIDELITE JAMB SIMILAR



MASONRY/CONCRETE INSTALLATION
OUTSWING DOOR SHOWN, OUTSWING SIDELITE SIMILAR

NAN YA PLASTICS CORP. USA
8989 NORTH LOOP EAST
HOUSTON, TX 77029

NEUMA CLASSIC PVC GLAZED PATIO DOOR
INSWING/OUTSWING NON-IMPACT
OUTSWING INSTALLATION DETAILS

| | | |
|---------------|---------------------|-----------------|
| DRAWN: TJH | DWG NO. 08-00872 | REV - |
| SCALE NTS | DATE 10/23/09 | SHEET 6 OF 6 |

