

Florida Building Code Product Approval

FL10182.10-R5 Impact- 12'0" x 6'11" Gliding Full Lite DP50 (X, OX, OXO, XX, OXXO)

| FL # | FL10181-R5 | | | | | | | | | | |
|---|---|-----------------|-------------|------------------------------|------|---------------------------|------|------------|------|------------|------|
| Application Type | Revision | | | | | | | | | | |
| Code Version | 2010 | | | | | | | | | | |
| Application Status | Approved | | | | | | | | | | |
| | *Approved by DBPR. Approvals by DBPR shall be reviewed and ratified by the POC and/or the Commission if necessary. | | | | | | | | | | |
| Comments | | | | | | | | | | | |
| Archived | <input type="checkbox"/> | | | | | | | | | | |
| Product Manufacturer | Nan Ya Plastics Corporation USA | | | | | | | | | | |
| Address/Phone/Email | 8989 North Loop East Houston, TX 77029 (713) 674-7822 Ext 105 ajen96@yahoo.com.tw | | | | | | | | | | |
| Authorized Signature | RUSKIN WU ajen96@yahoo.com.tw | | | | | | | | | | |
| Technical Representative | Ruskin Wu | | | | | | | | | | |
| Address/Phone/Email | 8989 North Loop East Houston, TX 77029-1217 (713) 674-7822 Ext 105 ajen96@yahoo.com.tw | | | | | | | | | | |
| Quality Assurance Representative | | | | | | | | | | | |
| Category | Exterior Doors | | | | | | | | | | |
| Subcategory | Sliding Exterior Door Assemblies | | | | | | | | | | |
| Compliance Method | Certification Mark or Listing | | | | | | | | | | |
| Certification Agency | National Accreditation & Management Institute | | | | | | | | | | |
| Validated By | National Accreditation & Management Institute, | | | | | | | | | | |
| Referenced Standard and Year (of Standard) | <table border="0"> <thead> <tr> <th><u>Standard</u></th> <th><u>Year</u></th> </tr> </thead> <tbody> <tr> <td>AAMA/WDMA/CSA 101/I.S.2/A440</td> <td>2008</td> </tr> <tr> <td>ANSI/AAMA/NWWDA 101/I.S.2</td> <td>1997</td> </tr> <tr> <td>ASTM E1886</td> <td>2005</td> </tr> <tr> <td>ASTM E1996</td> <td>2006</td> </tr> </tbody> </table> | <u>Standard</u> | <u>Year</u> | AAMA/WDMA/CSA 101/I.S.2/A440 | 2008 | ANSI/AAMA/NWWDA 101/I.S.2 | 1997 | ASTM E1886 | 2005 | ASTM E1996 | 2006 |
| <u>Standard</u> | <u>Year</u> | | | | | | | | | | |
| AAMA/WDMA/CSA 101/I.S.2/A440 | 2008 | | | | | | | | | | |
| ANSI/AAMA/NWWDA 101/I.S.2 | 1997 | | | | | | | | | | |
| ASTM E1886 | 2005 | | | | | | | | | | |
| ASTM E1996 | 2006 | | | | | | | | | | |
| Equivalence of Product Standards Certified By | | | | | | | | | | | |

Florida Building Code Product Approval

FL10182.10-R5 Impact- 12'0" x 6'11" Gliding Full Lite DP50 (X, OX, OXO, XX, OXXO)

| | |
|---------------------------|-------------------|
| Product Approval Method | Method 1 Option A |
| Date Submitted | 04/14/2014 |
| Date Validated | 08/06/2014 |
| Date Pending FBC Approval | |
| Date Approved | 08/10/2014 |

| FL # | Model, Number or Name | Description |
|---|--------------------------------|--|
| 10181.10 | SERIES SPLS GLIDING PATIO DOOR | SERIES SPLS GLIDING PATIO DOOR - 120611 - IMPACT |
| Limits of Use Approved for use in HVHZ: No Approved for use outside HVHZ: Yes Impact Resistant: Yes Design Pressure: +50/-50 Other: | | Certification Agency Certificate FL10181_R5_C_CAC_NI011356.02.pdf Quality Assurance Contract Expiration Date 06/30/2016 Installation Instructions FL10181_R5_II_08-01898.pdf Verified By: Luis Roberto Lomas 62514 Created by Independent Third Party: Yes Evaluation Reports FL10181_R5_AE_512590A.pdf Created by Independent Third Party: Yes |

Florida Building Code Product Approval

FL10182.10-R5 Impact- 12'0" x 6'11" Gliding Full Lite DP50 (X, OX, OXO, XX, OXXO)

NOTICE OF PRODUCT CERTIFICATION



CERTIFICATION NO: NI011356.02
 DATE: 12/14/2012
 CERTIFICATION PROGRAM: Structural
 COMPANY: Nan Ya
 CODE: 661-1

To verify that the "Notice of Product Certification" is valid, please visit www.NAMICertification.com to assure that the product is active and currently listed. This certification represents product conformity to the applicable specification and that certification criteria has been satisfied. A NAMI approved certification label must be applied to the product to claim certification status. Please review and advise NAMI if any corrections are required to this document.

| COMPANY NAME AND ADDRESS | PRODUCT DESCRIPTION |
|---|---|
| Nan Ya Plastics Corporation USA 8989 North Loop East, Suite 800 Houston, TX 77029 | Series "SPLS" Gliding Patio Door Configuration: OXXO Glazing: IG-1/8" Tempered Glass/Laminate-1/8" Annealed Glass/0.090" PVB Interlayer/1/8" Annealed Glass Frame: W-3585mm(141.13") H-2093mm(82.38") Panel: W-908mm(35.75") H-2013mm(79.25") DLO: W-667mm(26.75") H-1676mm(66.00") |

| SPECIFICATION | PRODUCT RATING |
|--|--|
| AAMA/WDMA/CSA 101/LS.2/A440-08 ASTM E1886-02/04/05/E1996-04/06/09 | Class R-PG50 3585 X 2093 (142 x 83)-SD Design Pressure = +50/-50 psf Wind Zone 4-Missile Level D Qualifies Configurations: O/X/OX/XO/OXO/XXO/OXX/OXXO |

Product Tested By: National Certified Testing Laboratories
 Report No: NCTL-210-3821-5
 Expiration Date: June 30, 2016

Administrator's Signature: _____

NATIONAL ACCREDITATION AND
 MANAGEMENT INSTITUTE, INC.
 4794 George Washington Memorial Highway
 Hayes, VA 23072
 Tel: (804) 684-5124/Fax: (804) 684-5122

Florida Building Code Product Approval

FL10182.10-R5 Impact- 12'0" x 6'11" Gliding Full Lite DP50 (X, OX, OXO, XX, OXXO)

L. Roberto Lomas P.E.

233 W. Main Street
Danville, VA 24541
434-688-0609
rlomas@rlomaspe.com

Engineering Evaluation Report

Report No.: 512590A

Manufacturer: Nan Ya Plastics Corp. USA
8989 North Loop East
Houston, TX 77029

Product Line: Series SPLS Gliding Patio Door – 120611 - Impact

Compliance:

The above mentioned product has been evaluated for compliance with the requirements of the Florida Department of Business and Professional Regulation for Statewide Acceptance per Rule 61G20-3.005 method 1(a). The product listed herein complies with requirements of the Florida Building Code.

Supporting Technical Documentation:

1. Approval document: drawing number 08-01898, prepared, signed and sealed by Luis Roberto Lomas P.E.
2. Report No.: NTCL-210-3821-5 signed and sealed by Gerard J. Ferrara P.E.
National Certified Testing Laboratories, Orlando, FL.
AAMA/WDMA/CSA 101/I.S.2/A440-08
Design pressure: ±50.0psf
Water penetration resistance 7.5psf
ASTM E1886-02/04/05 and ASTM E1996-04/06/09
ASTM E1886/ E1996 Large Missile Impact, Level D, Wind Zone 4
ASTM E1886/ E1996 Cyclic Load Test, ±50.0psf design pressure
3. Anchor calculations, report number 512590-1, prepared, signed and sealed by Luis Roberto Lomas P.E.

Limitations and Conditions of use:

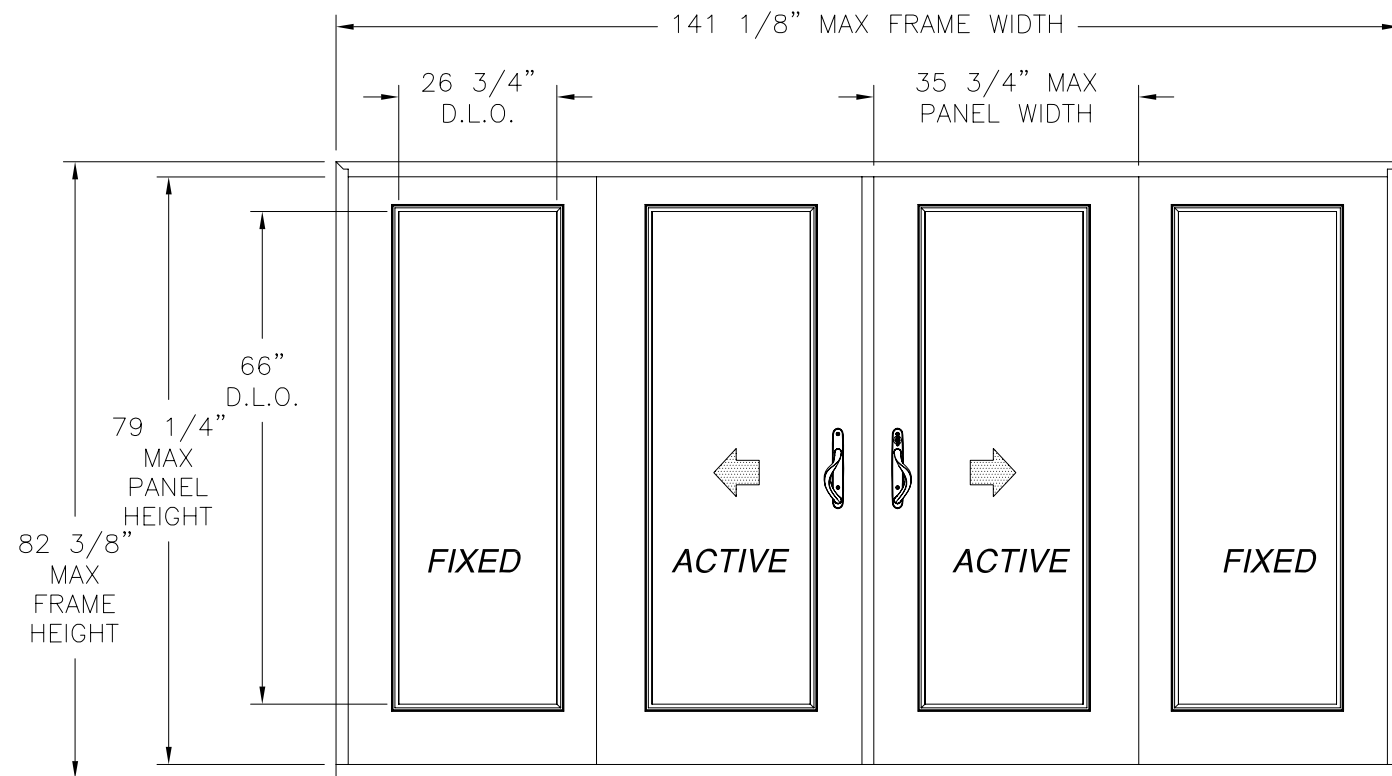
- Maximum design pressure: ±50.0psf
- Maximum unit size: 141 1/8" x 82 3/8"
- Units must be glazed per ASTM E 1300-04, see installation instructions for glass options.
- This product is not rated to be used in the HVHZ.
- This product is impact resistant and does not require impact protection in wind borne debris regions.

Installation: Units must be installed in accordance with approval document, 08-01898.

Certification of Independence: Please note that I don't have nor will acquire a financial interest in any company manufacturing or distributing the product(s) for which this report is being issued. Also, I don't have nor will acquire a financial interest in any other entity involved in the approval process of the listed product(s).



| REVISIONS | | | |
|-----------|-------------|------|----------|
| REV | DESCRIPTION | DATE | APPROVED |
| | | | |



NOTES:

1. THE PRODUCT SHOWN HEREIN IS DESIGNED AND MANUFACTURED TO COMPLY WITH REQUIREMENTS OF THE FLORIDA BUILDING CODE.
2. WOOD FRAMING AND MASONRY OPENING TO BE DESIGNED AND ANCHORED TO PROPERLY TRANSFER ALL LOADS TO STRUCTURE. FRAMING AND MASONRY OPENING IS THE RESPONSIBILITY OF THE ARCHITECT OR ENGINEER OF RECORD.
3. 1X BUCK OVER MASONRY/CONCRETE IS OPTIONAL. WHERE 1X BUCK IS NOT USED DISSIMILAR MATERIALS MUST BE SEPARATED WITH APPROVED COATING OR MEMBRANE. SELECTION OF COATING OR MEMBRANE IS THE RESPONSIBILITY OF THE ARCHITECT OR ENGINEER OF RECORD.
4. UNITS MUST BE GLAZED PER ASTM E1300-04, SEE SHEET 2 FOR GLASS OPTIONS.
5. APPROVED IMPACT PROTECTIVE SYSTEM IS NOT REQUIRED FOR THIS PRODUCT IN WIND BORNE DEBRIS REGIONS.
6. FRAME JAMB AND HEAD MATERIAL: CO-EXTRUDED PVC FOAM 1 1/2" THICK.
7. FRAME SILL MATERIAL: CO-EXTRUDED PVC FOAM 2" THICK WITH ALUMINUM CLADDING .063" THICK.
8. DOOR PANEL AND SIDELITE MATERIAL: PVC FOAM TOP AND BOTTOM RAILS, AND PVC FOAM VERTICAL STILES WITH PINE REINFORCEMENTS AND POLYURETHANE FOAM CORE.
9. APPROVED CONFIGURATIONS: OX, XO, AND OXXO. SEE SHEET 2.

SERIES SPLS GLIDING PATIO DOOR - 120611
EXTERIOR VIEW

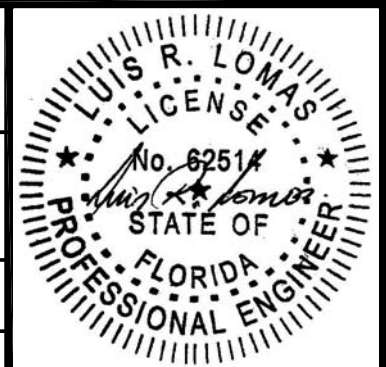
| DESIGN PRESSURE RATING | IMPACT RATING |
|------------------------|----------------------|
| ±50.0PSF | LARGE MISSILE IMPACT |

MISSILE LEVEL D, WIND ZONE 4

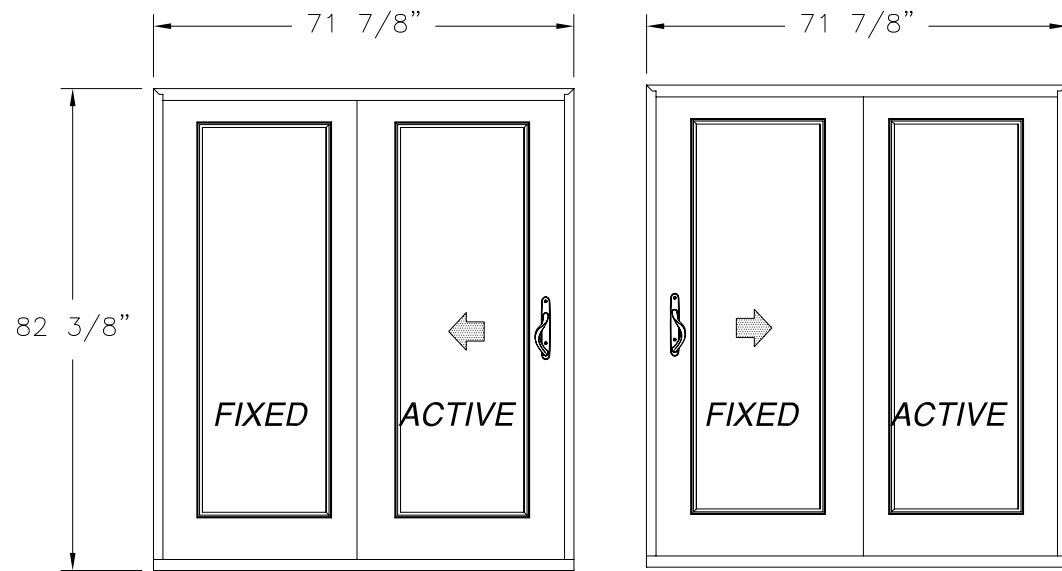
SIGNED: 01/17/2013

| TABLE OF CONTENTS | |
|-------------------|---|
| SHEET NO. | DESCRIPTION |
| 1 | OXXO ELEVATION AND NOTES |
| 2 | ADDITIONAL CONFIGURATIONS ANCHOR LAYOUTS & HARDWARE |
| 3 - 5 | INSTALLATION DETAILS |

| | | |
|--|---------------------|-----------------|
| <p>NAN YA PLASTICS CORP. USA 8989 NORTH LOOP EAST HOUSTON, TX 77029</p> | | |
| <p>SERIES SPLS GLIDING PATIO DOOR 120611 IMPACT OXXO ELEVATION AND NOTES</p> | | |
| DRAWN: J.L. | DWG NO. 08-01898 | REV - |
| SCALE NTS | DATE 01/17/13 | SHEET 1 OF 5 |

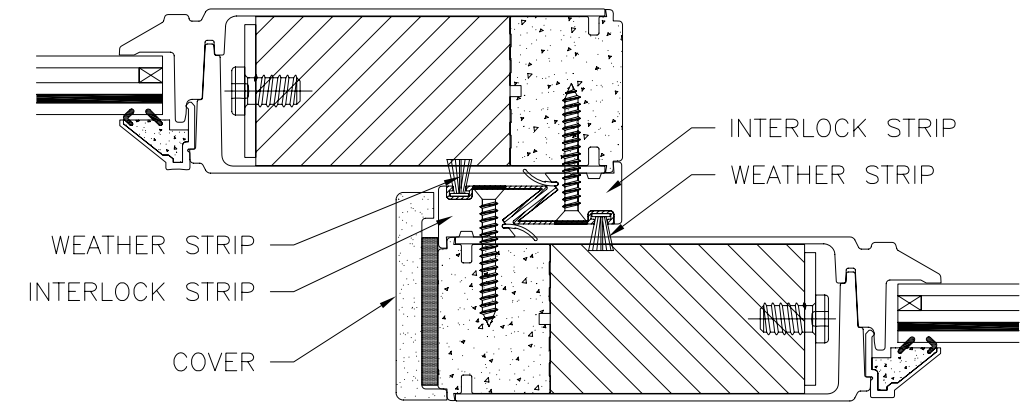


| REVISIONS | | | |
|-----------|-------------|------|----------|
| REV | DESCRIPTION | DATE | APPROVED |
| | | | |

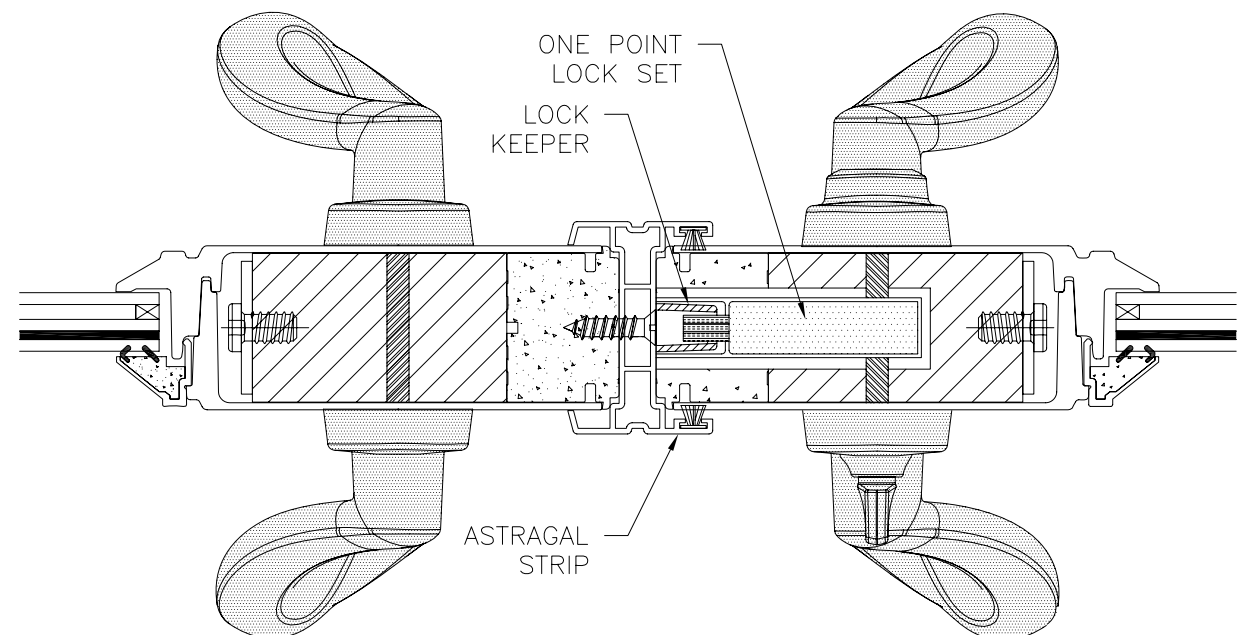


SINGLE W/SIDELITE
EXTERIOR VIEW

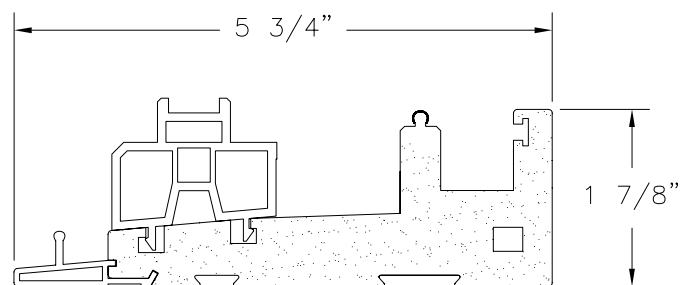
SINGLE W/SIDELITE
EXTERIOR VIEW



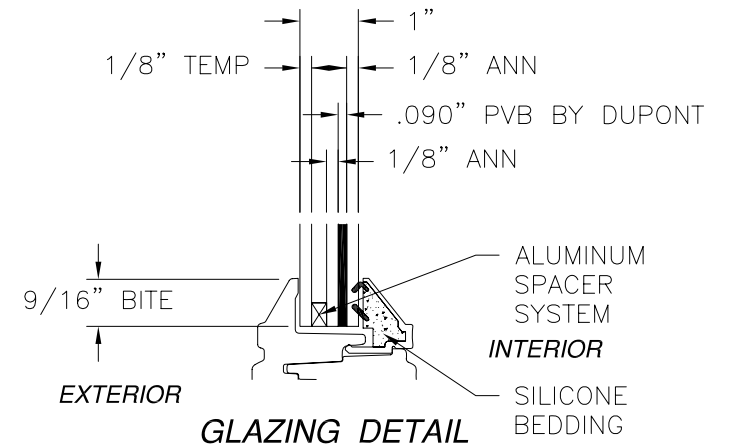
MEETING RAIL DETAIL



ASTRAGAL DETAIL



DOOR SILL



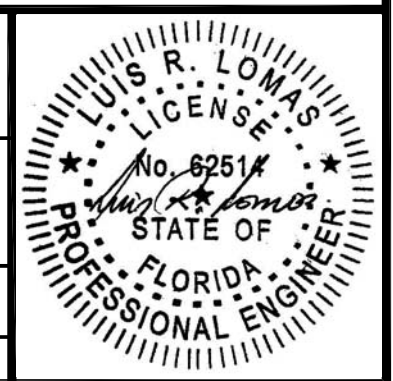
GLAZING DETAIL

| HARDWARE SCHEDULE | |
|-------------------|--|
| A. | ONE POINT LOCKING SYSTEM |
| B. | (1) DIE CAST HANDLE SET PER ACTIVE PANEL |
| C. | (2) STAINLESS STEEL TANDEM ROLLERS PER PANEL |
| D. | PVC ASTRAGAL BY NAN YA PLASTICS |

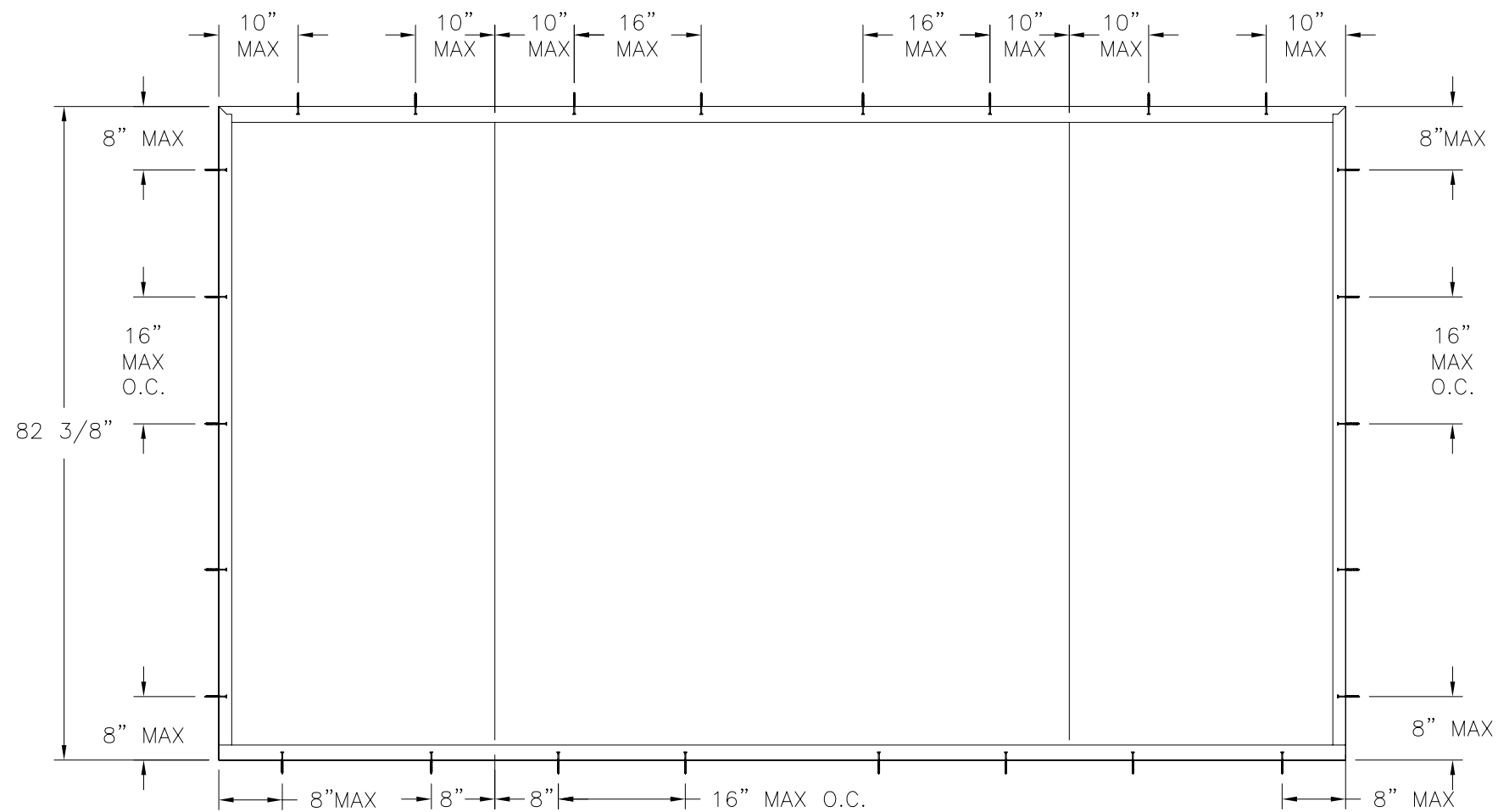
NAN YA PLASTICS CORP. USA
8989 NORTH LOOP EAST
HOUSTON, TX 77029

SERIES SPLS GLIDING PATIO DOOR
120611 IMPACT
ADDITIONAL CONFIGURATIONS AND HARDWARE

| | | |
|----------------|---------------------|--------------|
| DRAWN: J.L. | DWG NO. 08-01898 | REV - |
| SCALE NTS | DATE 01/17/13 | SHEET 2 OF 5 |



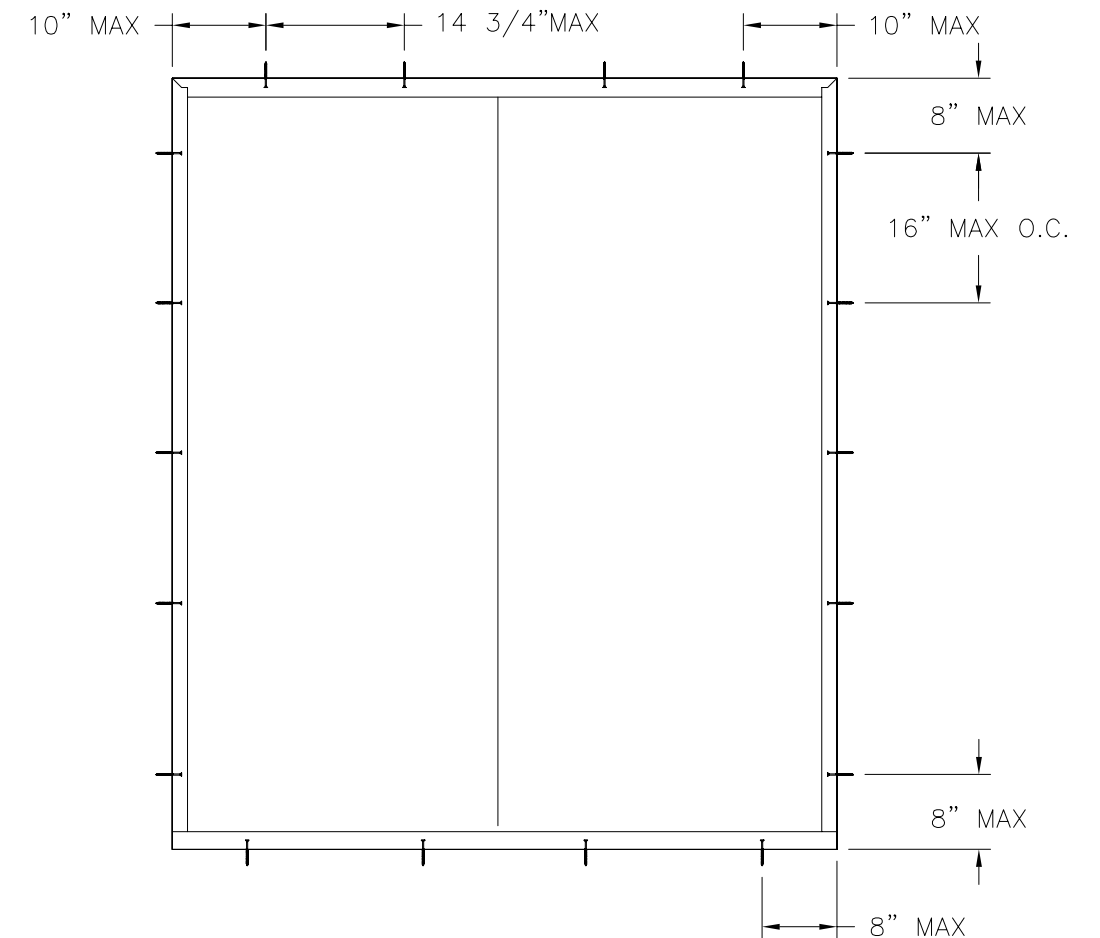
| REVISIONS | | | |
|-----------|-------------|------|----------|
| REV | DESCRIPTION | DATE | APPROVED |
| | | | |



ANCHORING LAYOUT FOR DOUBLE W/SIDELITES
EXTERIOR VIEW

ANCHORING NOTES:

1. SHIM AS REQUIRED AT EACH INSTALLATION ANCHOR WITH LOAD BEARING SHIM. SHIM WHERE SPACE OF 1/16" OR GREATER OCCURS. MAXIMUM ALLOWABLE SHIM STACK TO BE 1/4".
2. FOR ANCHORING INTO WOOD FRAMING OR 2X BUCK USE #10 WOOD SCREWS WITH SUFFICIENT LENGTH TO ACHIEVE A 1 3/8" MINIMUM EMBEDMENT INTO SUBSTRATE. LOCATE ANCHORS AS SHOWN IN ELEVATIONS AND INSTALLATION DETAILS.
3. FOR ANCHORING INTO MASONRY/CONCRETE USE 3/16" TAPCONS WITH SUFFICIENT LENGTH TO ACHIEVE A 1 1/4" MINIMUM EMBEDMENT INTO SUBSTRATE WITH 2 5/8" MINIMUM EDGE DISTANCE. LOCATE ANCHORS AS SHOWN IN ELEVATIONS AND INSTALLATION DETAILS.
4. ALL FASTENERS TO BE CORROSION RESISTANT.
5. INSTALLATION ANCHORS SHALL BE INSTALLED IN ACCORDANCE WITH ANCHOR MANUFACTURER'S INSTALLATION INSTRUCTIONS AND ANCHORS SHALL NOT BE USED IN SUBSTRATES WITH STRENGTHS LESS THAN THE MINIMUM STRENGTH SPECIFIED BELOW:
 - A. WOOD – MINIMUM SPECIFIC GRAVITY OF G=0.42
 - B. CONCRETE – MINIMUM COMPRESSIVE STRENGTH OF 3,192 PSI.
 - C. MASONRY – STRENGTH CONFORMANCE TO ASTM C-90, GRADE N, TYPE 1 (OR GREATER).

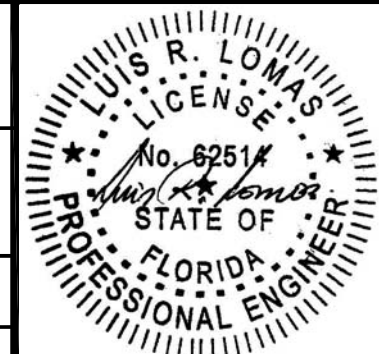


ANCHORING LAYOUT FOR SINGLE W/SIDELITE
EXTERIOR VIEW

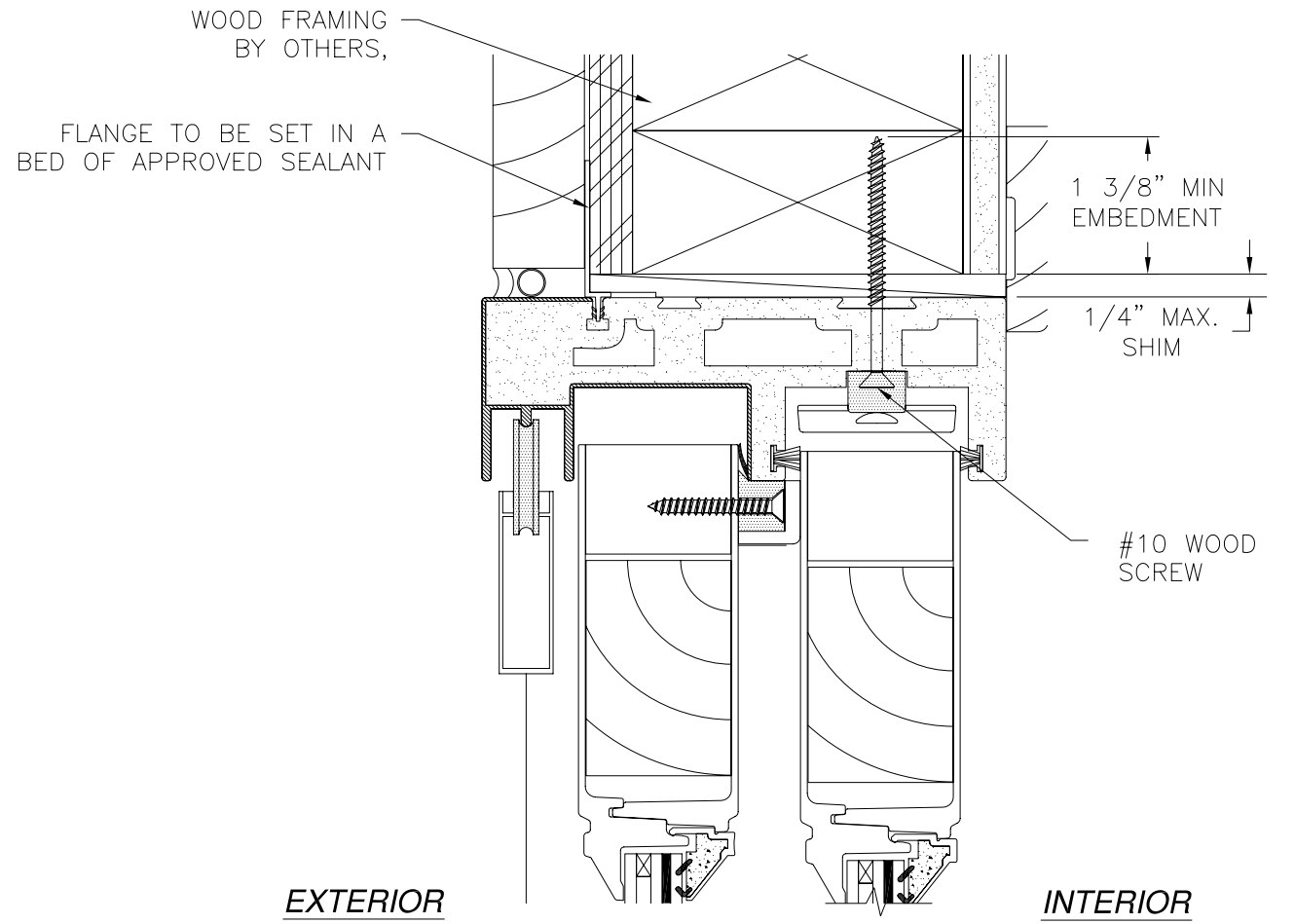
NAN YA PLASTICS CORP. USA
8989 NORTH LOOP EAST
HOUSTON, TX 77029

SERIES SPLS GLIDING PATIO DOOR
120611 IMPACT
ANCHORING LAYOUTS

| | | |
|----------------|---------------------|--------------|
| DRAWN: J.L. | DWG NO. 08-01898 | REV - |
| SCALE NTS | DATE 01/17/13 | SHEET 3 OF 5 |

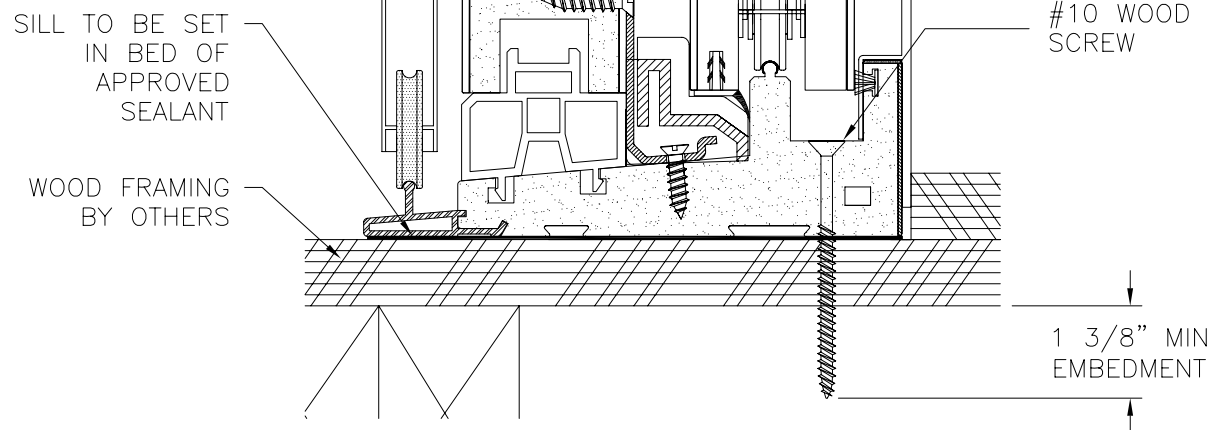


| REVISIONS | | | |
|-----------|-------------|------|----------|
| REV | DESCRIPTION | DATE | APPROVED |
| | | | |

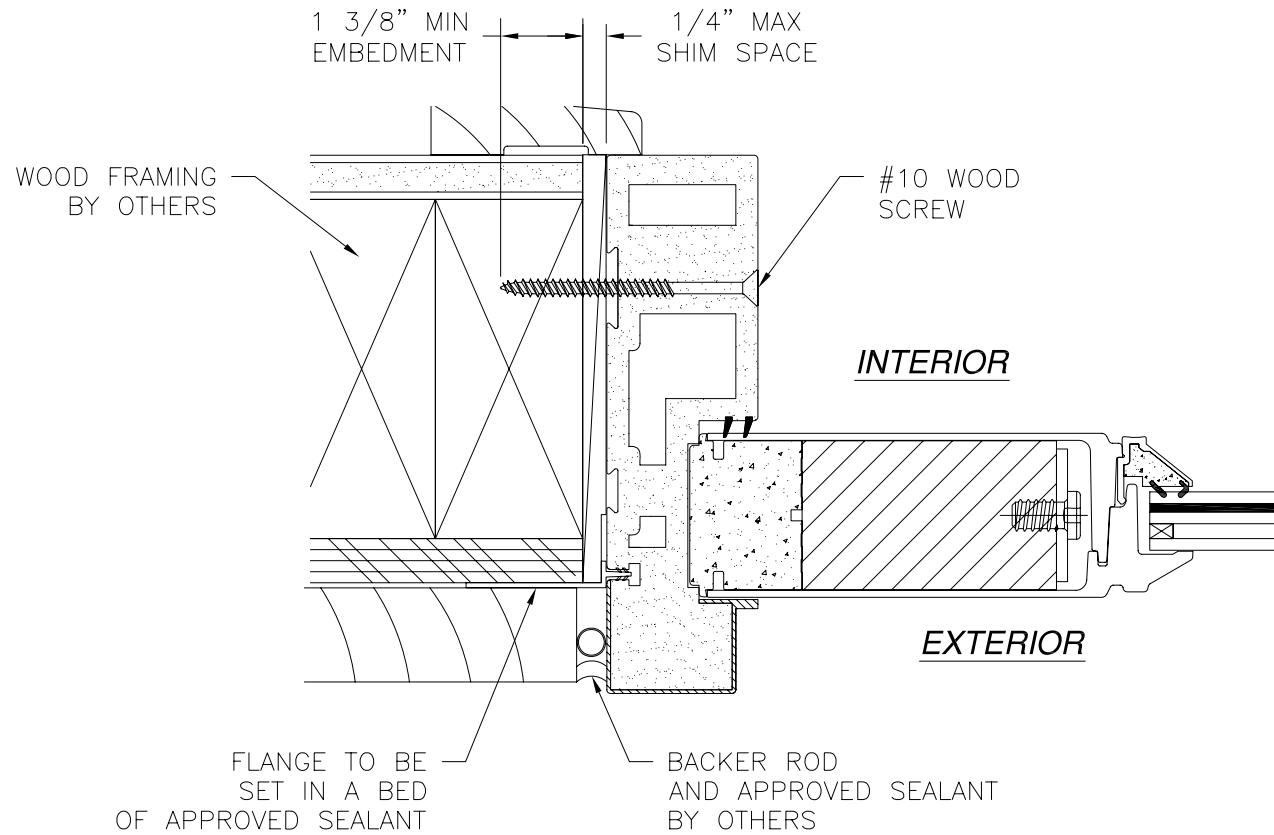


EXTERIOR

INTERIOR



VERTICAL CROSS SECTION
 DOOR SHOWN, SIDELITE SIMILAR
 2X BUCKWOOD FRAMING INSTALLATION



INTERIOR

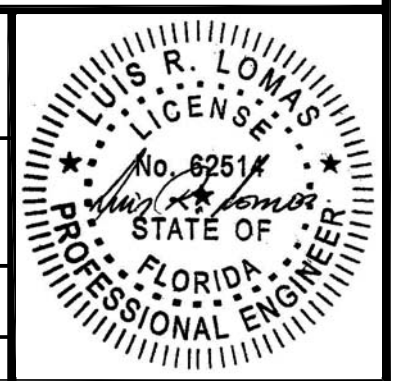
EXTERIOR

HORIZONTAL CROSS SECTION
 2X BUCKWOOD FRAMING INSTALLATION

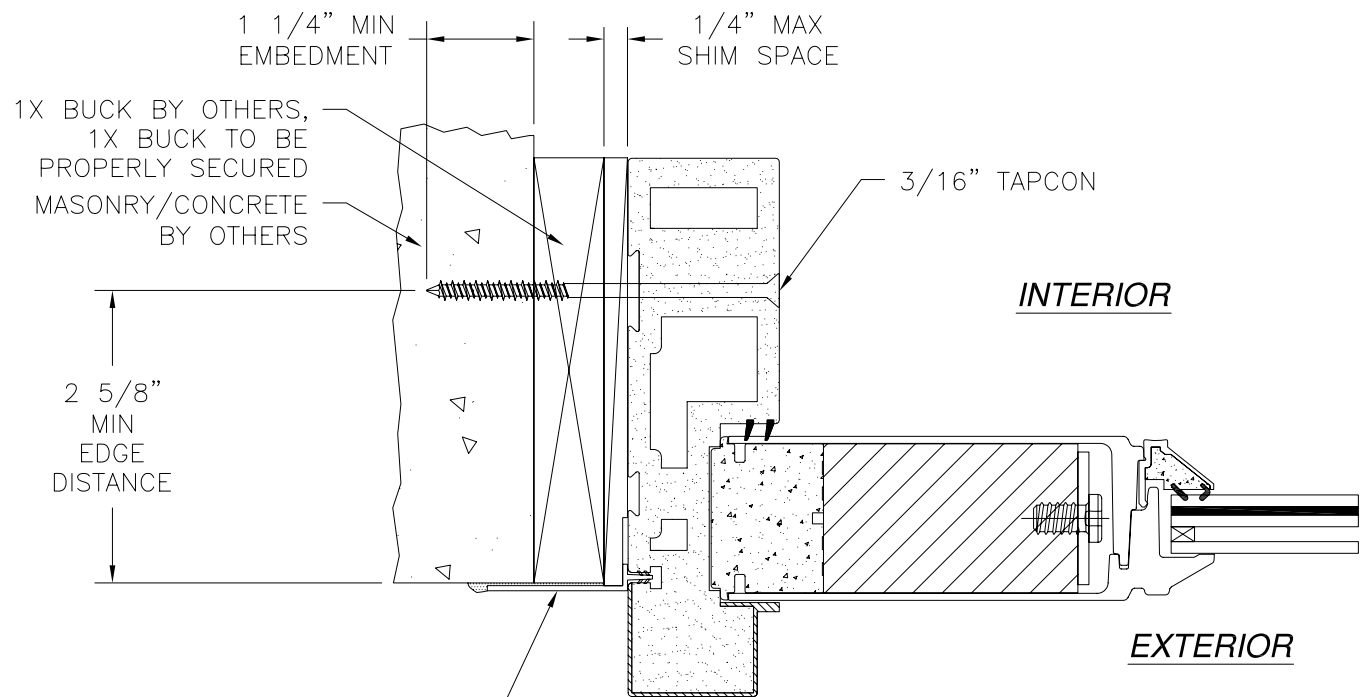
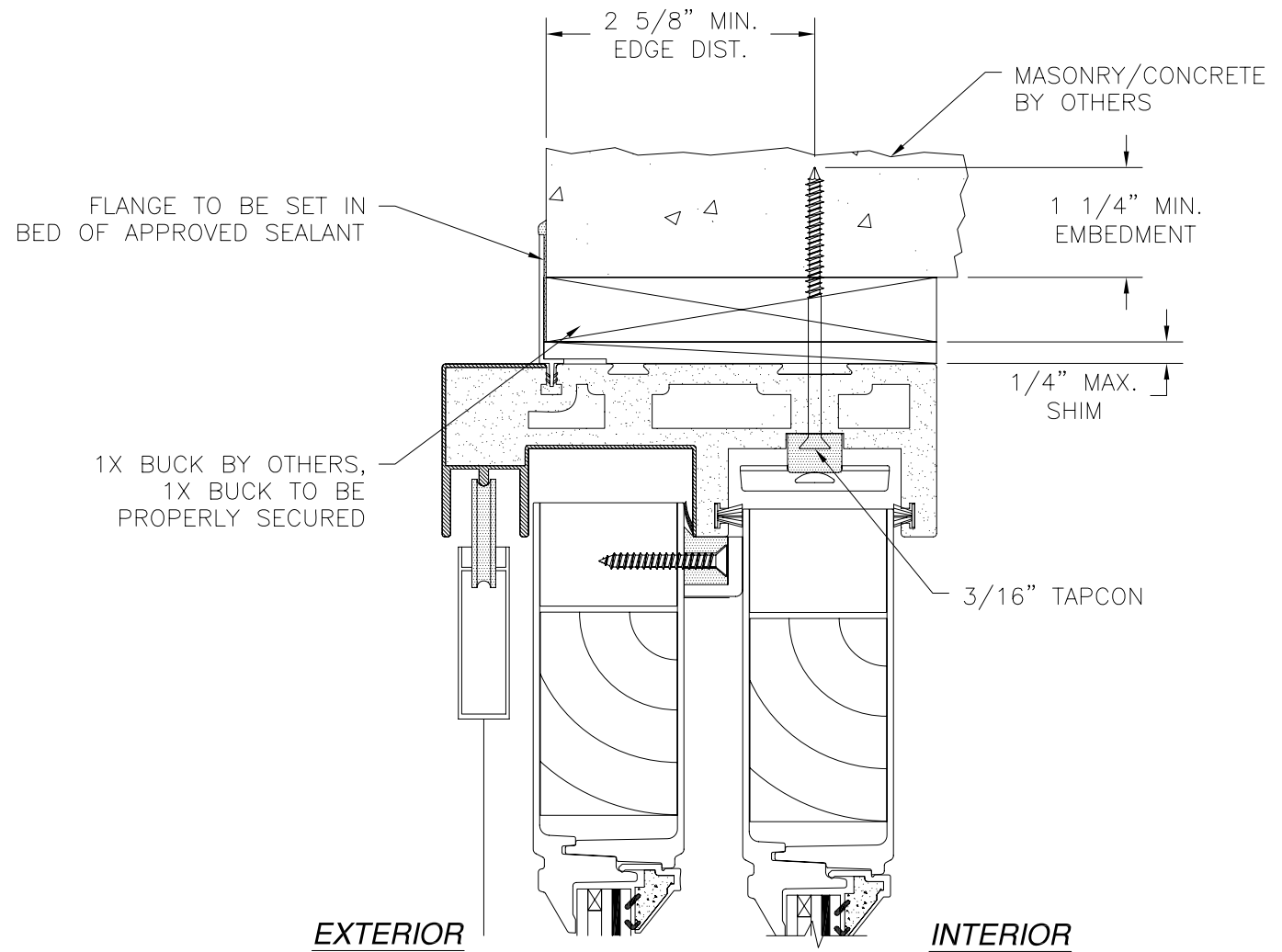
NAN YA PLASTICS CORP. USA
 8989 NORTH LOOP EAST
 HOUSTON, TX 77029

SERIES SPLS GLIDING PATIO DOOR
 120611 IMPACT
 INSTALLATION DETAILS

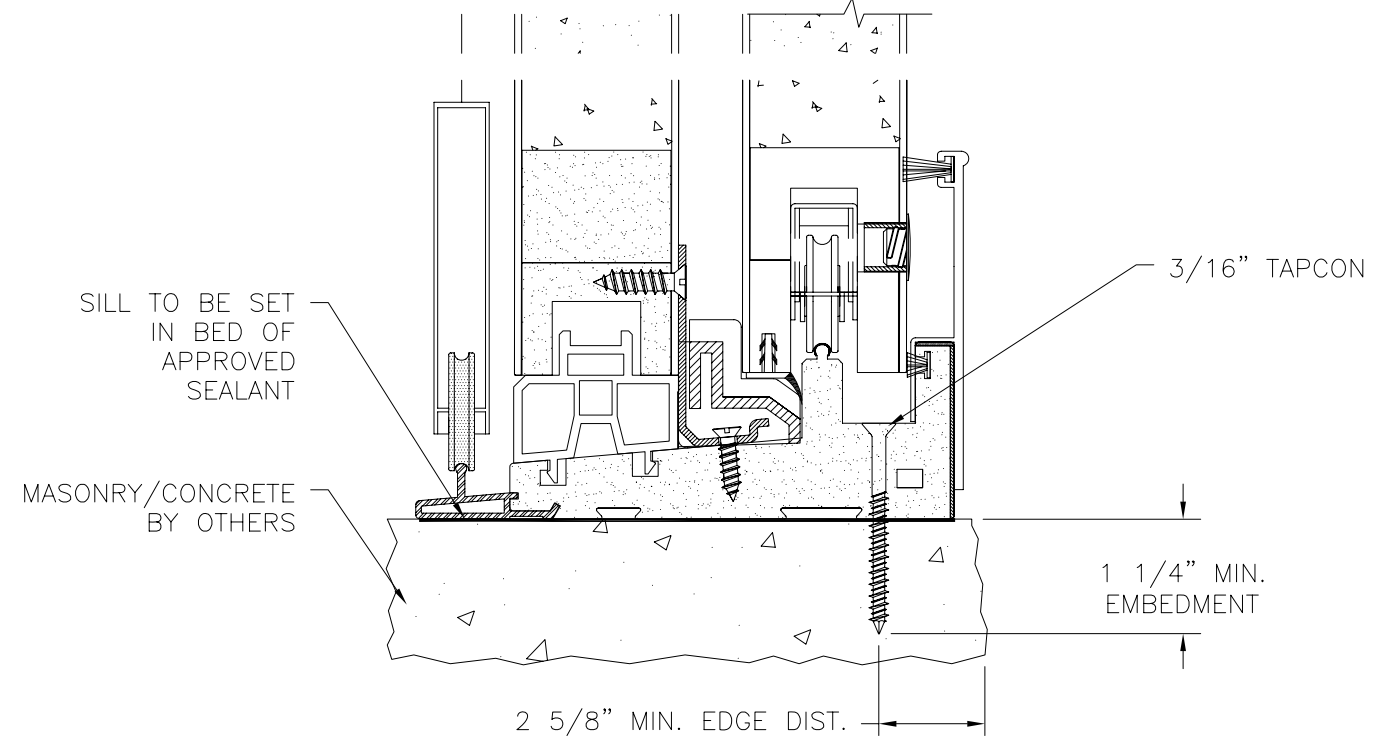
| | | |
|----------------|---------------------|--------------|
| DRAWN: J.L. | DWG NO. 08-01898 | REV - |
| SCALE NTS | DATE 01/17/13 | SHEET 4 OF 5 |



| REVISIONS | | | |
|-----------|-------------|------|----------|
| REV | DESCRIPTION | DATE | APPROVED |
| | | | |



HORIZONTAL CROSS SECTION
MASONRY/CONCRETE INSTALLATION



VERTICAL CROSS SECTION
MASONRY/CONCRETE INSTALLATION
DOOR SHOWN SIDELITE SIMILAR

NAN YA PLASTICS CORP. USA
8989 NORTH LOOP EAST
HOUSTON, TX 77029

SERIES SPLS GLIDING PATIO DOOR
120611 IMPACT
INSTALLATION DETAILS

| | | |
|----------------|---------------------|--------------|
| DRAWN: J.L. | DWG NO. 08-01898 | REV - |
| SCALE NTS | DATE 01/17/13 | SHEET 5 OF 5 |

